

#3 CARBURO - PRODOTTI MINERARIO

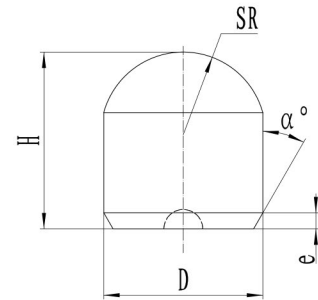
BOYUN



CARBURO
PRODOTTI MINERARIO



Cuspidi sferiche per punte triconiche

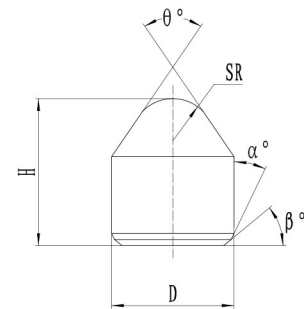


Unit:mm

Cuspidi sferiche per punte triconiche

Tipo	Dimensione				
	D	H	SR	α°	e
ZQ11.5*12.5KP	11.25	12.5	6.0	18	2.0
ZQ13*13.5KP	13.25	13.5	6.7	18	2.5
ZQ14*14.5KP	14.5	14.5	7.2	18	2.5

Cuspidi coniche per punte a media e bassa pressione DTH

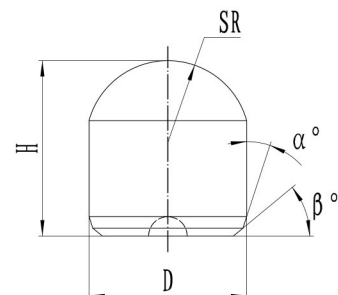


Unit:mm

Cuspidi coniche per punte a media e bassa pressione DTH

Tipo	Dimensione					
	D	H	SR	θ°	α°	β°
SZ12×18A	12.35	18	4.8	55	20	28.0
SZ12*18B	12.35	18	4.0	55	20	27.0
SZ12*18	12.35	18	4.5	53/55	20	20.0
SZ13*18	13.35	18	4.5	53/55	20	20.0
SZ13*19A	13.35	19	4.5	55	20	28.0
SZ13*19B	13.35	19	5.0	55	20	27.0
SZ14*19	14.35	19	5.0	53/55	20	20.0
SZ14*22A	14.35	22	5.0	55	20	14.5

Cuspidi sferiche per punte ad alta pressione DTH

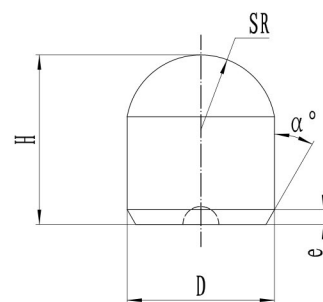


Unit:mm

Cuspidi sferiche per punte ad alta pressione DTH

Tipo	Dimensione				
	D	H	SR	α°	β°
ZQ14*20K(P)	14.2	20	7.2	18	27
ZQ16*22K(P)	16.25	22	9	18	27
ZQ18*25K	18.35	25	9.2	18	30

Cuspidi sferiche per riparo piano macchina

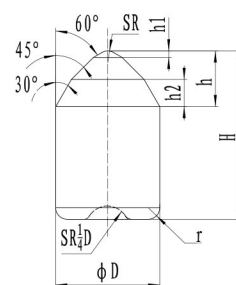
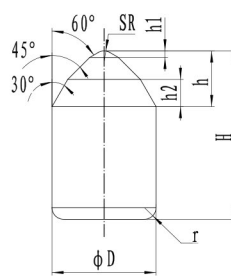
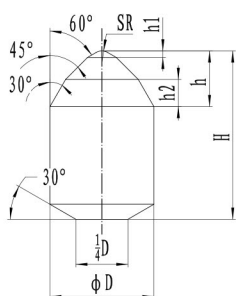
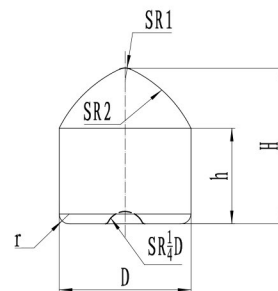
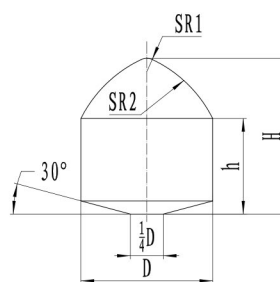
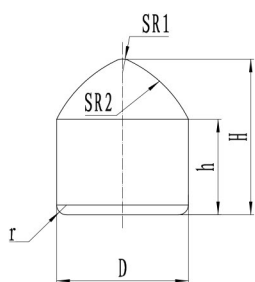
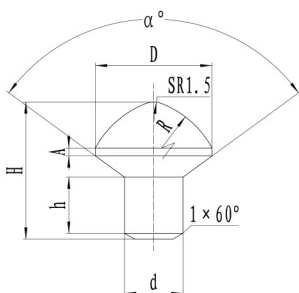


Unit:mm

Cuspidi sferiche per riparo piano macchina

Tipo	Dimensione				
	D	H	SR	α°	β°
ZQ16*23KP	16.25	23	9	18	1.8
ZQ16*21KP	16.25	21	9	18	1.8

Carburo Cementato per l'estrazione del carbone e minerale di ferro



Unit:mm

Cuspidi a fungo

Tipo	Dimensione									
	D		H		d		h	R	A	α°
	Dim.	Tol.	Dim.	Tol.	Dim.	Tol.				
Φ2021	20	±0.2	21	±0.2	12	-0.1 -0.3	8.0	35	2.0	120
Φ2427	24	±0.2	27	±0.2	14	-0.1 -0.3	10.0	45	3.0	120
Φ1822	18	±0.2	22	±0.2	10	-0.1 -0.3	8.0	30	1.5	90
Φ2025	20	±0.2	25	±0.2	12	-0.1 -0.3	10.0	35	1.5	90
Φ2027	20	±0.2	27	±0.2	12	-0.1 -0.3	10.5	35	4.0	90
Φ2228	22	±0.2	28	±0.2	14	-0.1 -0.3	12.0	40	1.5	90

Unit:mm

Cuspidi tipo J

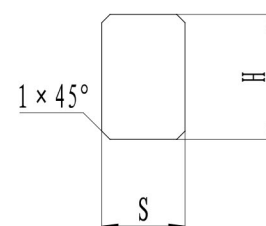
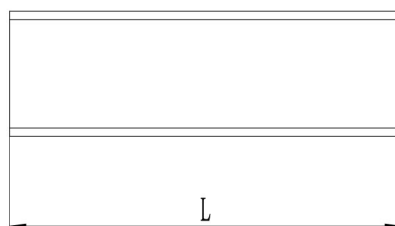
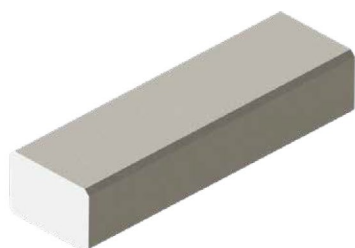
Tipo	Dimensione					
	D	H	h	SR1	SR2	r
ZJ25×38/P/KP	25	38	25	2	50	3
ZJ25×34/P/KP	25	34	21	2	50	3
ZJ24×30/P/KP	24	30	18	2	48	3
ZJ22×32/P/KP	22	32	21	2	44	2.5
ZJ19×26/P/KP	19	26	16.5	2	38	2.5
ZJ17×23/P/KP	17	23	14.5	2	34	2
ZJ16×25/P/KP	16	25	17	2	32	2

Unit:mm

Cuspidi tipo JN

Tipo	Dimensione						
	D	H	SR	r	h	h1	h2
JN21×35/P/KP	21	35	2	2.5	10.5	2	4.7
JN18×30/P/KP	18	30	2	2	10	1.4	5
JN18×28/P/KP	18	28	2	2	10	1.4	5
JN16×28/P/KP	16	28	2	2	8	1.7	3.3
JN14×26/P/KP	14	26	2	2	7	1.2	3.8

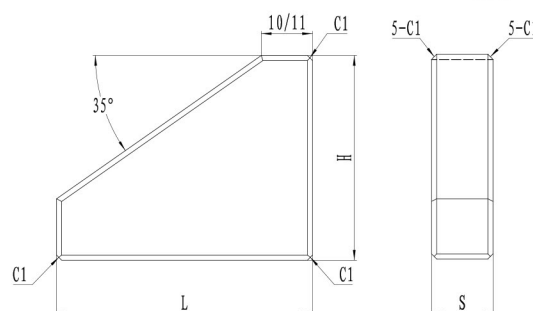
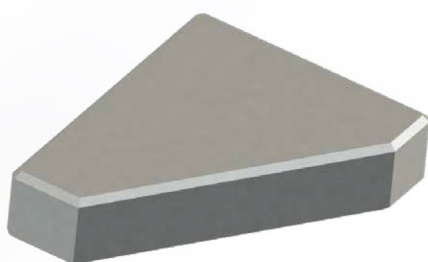
Carburo Cementato per macchine da ingegneria e foratura



Unit:mm

Placchette rettangolari per frantoi

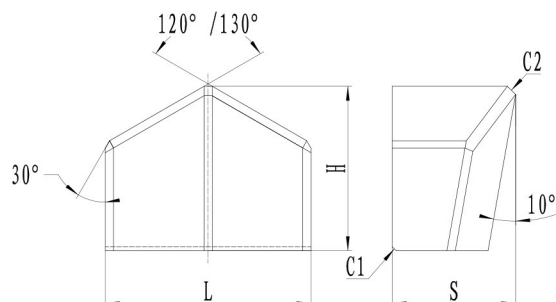
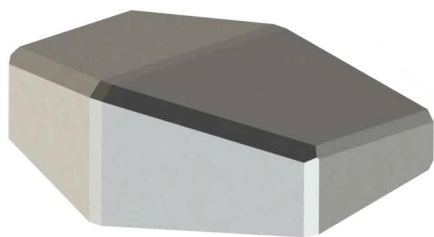
Tipo	Dimensione					
	L		H		S	
	Dim.	Tol.	Dim.	Tol.	Dim.	Tol.
47×15×10	47	±0.3	15	±0.2	10	0 -0.3
52×23×12	52	±0.1	23	±0.3	12	0 -0.3
52.5×23×12	52.5	±0.3	23	±0.3	12	0 -0.3
55×23×12	55	±0.3	23	±0.3	12	0 -0.3
190×20×12	190	±0.6	20	±0.3	12	0 -0.3
194×20×12	194	±0.6	20	±0.3	12	0 -0.3
210×20×10	210	±0.7	20	±0.3	10	0 -0.3
190×23×13	190	±0.6	23	±0.3	13	0 -0.3
189×23×13	189	±0.6	23	±0.3	13	0 -0.3
52.5×20×10	52.5	±0.05	20	-0.05	10	0 -0.05
105×20×10	105	±0.05	20	-0.05	10	0 -0.05



Unit:mm

Inserti a conchiglia per perforazione tunnel

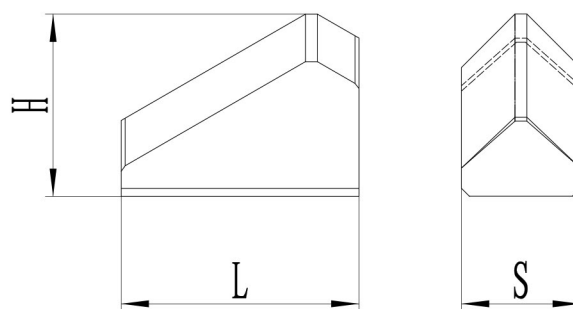
Tipo	Dimensione					
	L		H		S	
	Dim.	Tol.	Dim.	Tol.	Dim.	Tol.
62×50×12	62	±0.50	50	±0.30	12	±0.05
52×40×12	52	±0.40	40	±0.25	12	±0.05
45×35×12	45	±0.40	35	±0.25	12	±0.05
40×40×12	40	±0.35	40	±0.25	12	±0.05
40×25×12	40	±0.35	25	±0.20	12	±0.05
30×31×10	30	±0.30	31	±0.30	10	±0.05



Unit:mm

Inserti per frese

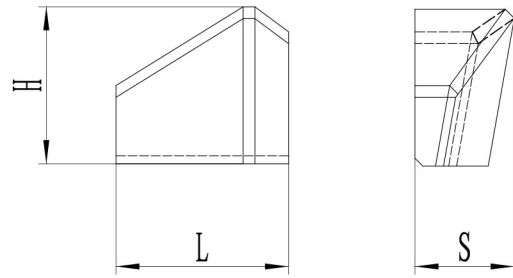
Tipo	Dimensione					
	L		H		S	
	Dim.	Tol.	Dim.	Tol.	Dim.	Tol.
60×45×30	60	±0.50	45	±0.40	30	±0.3
50×40×30	50	±0.40	40	±0.25	30	±0.3
40×35×25	40	±0.40	35	±0.25	25	±0.3
38×30×20	38	±0.350	30	±0.25	20	±0.3
50×35×25	50	±0.40	35	±0.30	25	±0.3
22×20×13	22	±0.20	20	±0.20	13	±0.3



Unit:mm

Inserti per frese

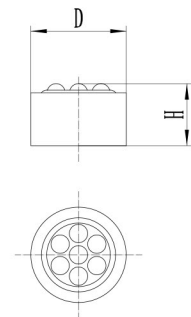
Tipo	Dimensione					
	L		H		S	
	Dim.	Tol.	Dim.	Tol.	Dim.	Tol.
45×39×25	45	±0.50	39	±0.4	25	-0.3
45×39×23	45	±0.40	39	±0.4	23	-0.3
37×37×19	37	±0.40	37	±0.4	19	-0.3
31×23×15	31	±0.25	23	±0.2	15	-0.3
20×20×15	20	±0.20	20	±0.2	15	-0.3



Unit:mm

Inserti per frese

Tipo	Dimensione					
	L		H		S	
	Dim.	Tol.	Dim.	Tol.	Dim.	Tol.
40×35×25	40	±0.50	35	±0.4	25	±0.2
39×33×25	39	±0.40	33	±0.4	25	±0.2
45×35×23	45	±0.40	35	±0.4	23	±0.2
22×20×13	22	±0.25	20	±0.2	13	±0.2
20×20×15	20	±0.20	20	±0.2	15	±0.2

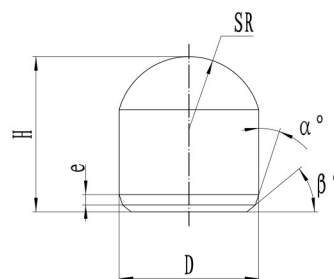


Unit:mm

Inserti per matrice composita diamantata

Tipo	Dimensione			
	D		H	
	Dim.	Tol.	Dim.	Tol.
21.5×16.0	21.5	+0.4	16	±0.2
21.5×13.5	21.5	+0.4	13.5	±0.2
21.5×13.0	21.5	+0.4	13	±0.2
21.5×15.5(平)	21.5	+0.4	15.5	±0.2
21.5×7.2(平)	21.5	+0.4	7.2	±0.2
18×9.5(平)	18	+0.3	9.5	±0.2
18×7.2(平)	18	+0.3	7.2	±0.2
15×13.5	15	+0.3	13.5	±0.2
15×9.5	15	+0.3	9.5	±0.2
15×8	15	+0.3	8	±0.2

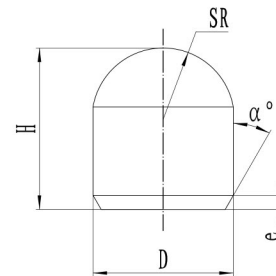
Carburo Cementato per l'industria mineraria



Unit:mm

Cuspidi sferiche

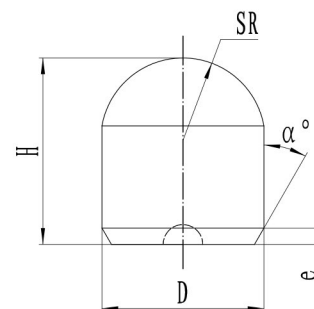
Tipo	Dimensione					
	D	H	SR	α°	β°	e
ZQ12×18	12.25	18	6.2	18	26.5	1.5
ZQ13×19	13.30	19	6.6	18	26.5	1.5
ZQ14×20	14.30	20	7.2	18	27.0	1.8
ZQ14×22	14.30	22	7.2	18	27.0	1.8
ZQ16×25	16.35	25	8.2	18	27.0	2.0
ZQ16×21K	16.35	21	9.0	18	30.0	2.0
ZQ19×30K	19.30	30	9.8	20	30.0	2.5
ZQ21×32K	21.70	32	10.9	20	30.0	2.5



Unit:mm

Cuspidi sferiche

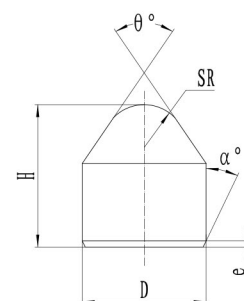
Tipo	Dimensione				
	D	H	SR	α°	e
ZQ08×10P	8.15	10	4.4	18	1
ZQ08×12P	8.15	12	4.4	18	1
ZQ09×14P	9.15	14	4.7	18	1
ZQ9.5×14	9.65	14	5.1	18	2
ZQ10×15P	10.25	15	5.2	18	1.2
ZQ11×15P	11.25	16	6	18	1.5
ZQ12×16P	12.25	16	6.6	18	1.5
ZQ12×17P	12.25	17	6.6	18	1.5
ZQ12×19P	12.25	19	7	18	1.5
ZQ13×18P	13.25	18	7	18	1.8
ZQ14×19P	14.25	19	7.7	18	1.8
ZQ19×30P	19.25	30	10	18	3.5



Unit:mm

Cuspidi sferiche

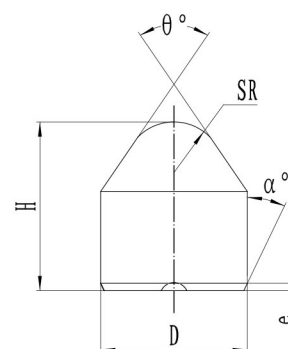
Tipo	Dimensione				
	D	H	SR	α°	e
ZQ11×15KP	11.25	15	6	18	2
ZQ12×17KP	12.25	17	6.6	18	1.8
ZQ13×19KP	13.25	19	7	18	1.8
ZQ14×20KP	14.25	20	7.5	18	1.8
ZQ16×22KP	16.25	22	9	18	1.8
ZQ16×23KP	16.25	23	9	18	1.8
ZQ16.5×23KP	16.75	23	9	18	2
ZQ16.5×25KP	16.75	25	9	18	2
ZQ18×24KP	18.35	24	9.2	18	2
ZQ20×30KP	20.25	30	10.7	18	2.5



Unit:mm

Cuspidi coniche

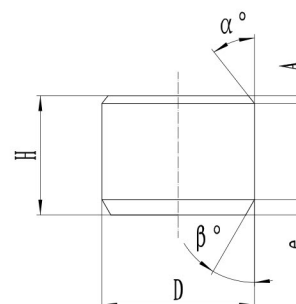
Tipo	Dimensione					
	D	H	SR	α°	β°	e
ZZ07×10P	7.15	10	3.5	18	70	1.0
ZZ08×10P	8.15	10	3.5	18	70	1.5
ZZ08×12P	8.15	12	3.5	18	70	1.5
ZZ08×12P	7.80	12	3.5	18	70	1.5
ZZ09×13P	9.15	13	3.8	18	70	1.5
ZZ09×14P	9.15	14	3.8	18	70	1.5
ZZ10×14P	10.15	14	4.2	18	70	1.5
ZZ10×15P	10.15	15	4.2	18	70	1.5
ZZ11×15P	11.25	15	4.5	18	70	1.8
ZZ12×17P	12.25	17	4.5	18	65	1.8



Unit:mm

Cuspidi coniche

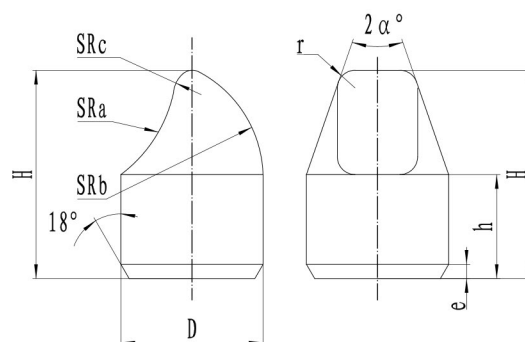
Tipo	Dimensione					
	D	H	SR	α°	β°	e
ZZ10×14KP	10.15	14	4.2	45	70	1.5
ZZ11×15KP	11.2	15	4.5	45	70	1.8
ZZ12×16KP	12.2	16	4.8	45	70	1.8
ZZ12×17KP	12.2	17	4.8	45	70	1.8
ZZ13×19KP	13.2	19	4.8	45	65	1.8
ZZ14×20KP	14.25	20	5	45	65	2
ZZ14×22KP	14.25	22	5	45	65	2
ZZ16×25KP	16.3	25	5.5	45	65	2
ZZ19×24.5KP	19.35	24.5	7	45	55	2
ZZ19×26KP	19.35	26	7	45	42	2



Unit:mm

Cuspidi piane

Tipo	Dimensione					
	D	H	A	α°	e	β°
ZP08×07P	8.15	7	1.0	45	1.5	18
ZP10×08P	10.15	8	1.2	45	1.5	18
ZP10×10P	10.15	10	1.2	45	1.5	18
ZP11×09P	11.20	9	1.2	45	1.8	18
ZP16×15P	16.4	15	-	-	1.8	45
ZP19×17P	19.4	17	-	-	2	45
ZP14×14KP	14.35	14	1.5	45	1.8	18
ZP14×16KP	14.35	16	1.5	45	1.8	18
ZP16×22KP	16.30	22	7.5	35	1.8	18
ZP16×27KP	18.30	27	10	35	1.8	18

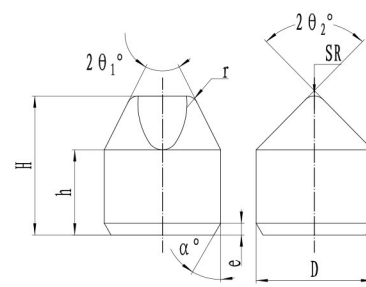


Unit:mm

Cuspidi a cucchiaio

Tipo	Dimensione								
	D	H	h	SRa	SRb	SRc	r	α°	e
ZS14×18P	14.25	18	10	12	20	2.5	2.5	18	2
ZS14×21P	14.25	21	12	12	20	2.5	2.5	18	1.5
ZS16×21P	16.3	21	10	15	23	2.5	2.5	18	2
ZS16×23P	16.3	23	12	15	23	2.5	2.5	18	2
ZS16×26P	16.3	26	14	20	28	2.5	2.5	18	2
ZS17×24P	17.3	24	13	16	25	3	3	20	2
ZS19×30P	19.4	30	17	16	25	3	3	15	2
ZS22×40P	22.4	40	21	20	30	3	3	13	2
ZS25×45P	25.4	45	23	30	35	3.5	3.5	13	2

Cuspidi coniche

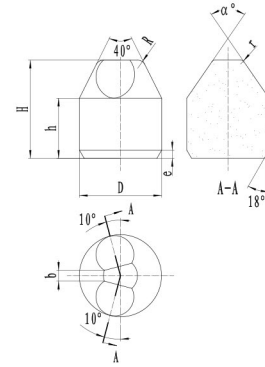


Unit:mm

tipo ZX

Tipo	Dimensione								
	D	H	h	SR	e	r	θ_1°	θ_2°	α°
ZX14×21P	14.2	21	11.5	4	1.5	1.5	18	30	18
ZX15×22P	15.2	22	13	4.5	1.5	2	18	30	18
ZX16×23P	16.2	23	14.5	6	2	2	18	32	18
ZX16×24P	16.2	24	14	5	2	2	18	30	18
ZX18×25P	18.3	25	17	7.5	2	2	18	32	18
ZX18×26P	18.3	26	15	6	2	2	18	30	18
ZX19×29P	19.4	29	17	4	2	3	15	30	18

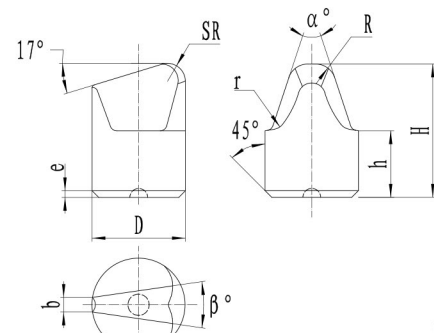
Cuspidi coniche



Unit:mm

tipo ZB

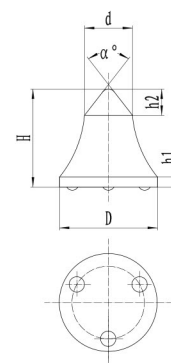
Tipo	Dimensione							
	D	H	h	R	r	e	α°	b
ZB14×17AP	14.25	17	12	3	2.5	1.5	90	3
ZB14×18AP	14.25	18	12	3	2.5	1.5	80	4
ZB14×19AP	14.25	19	12	3	2.5	1.5	75	4
ZB15×19.8AP	15.3	19.8	11.8	2	2.5	1.5	66	3.5
ZB16×21AP	16.3	21	14	3	3	1.5	70	4.5
ZB19×24AP	19.4	24	15	3.5	3	1.5	70	4.5
ZB22×30AP	22.4	30	17	3.5	3	1.5	60	5



Unit:mm

tipo ZB

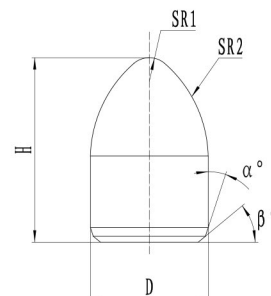
Tipo	Dimensione									
	D	H	h	R	SR	r	e	α°	β°	b
ZB09×14P	9	14	9.5	3.8	5.5	2	1.5	65	20	2
ZB09×14P	9	14	9.0	3.8	5.5	2	1.5	55	30	2
ZB12×17P	12	17	11	4.5	7.5	2	1.5	65	20	3
ZB14×20P	14	20	12.5	5	8.5	2	2.0	65	20	3.5
ZB14×20P	14	20	12	5	8.5	2	2.0	55	30	3.5



Unit:mm

Cuspidi paraboliche

Tipo	Dimensione					
	D	d	H	h1	h2	α°
3T10416T	16.07	8	15.08	3	1.8	92
3T10427T	18.75	8	17.78	3.75	1.5	83
3T10434T	17.86	8	17.13	3.84	1.6	82

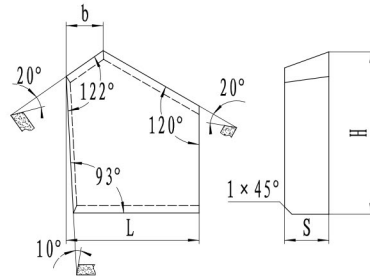
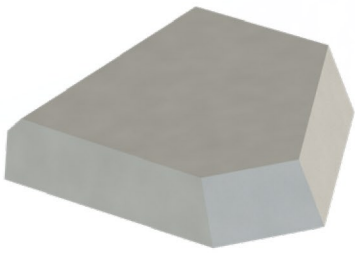


Unit:mm

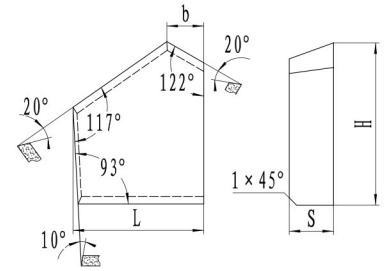
Cuspidi paraboliche

Tipo	Dimensione					
	D	H	SR1	SR2	α°	β°
ZD09×14.5	9.2	14.5	2	12	20	27
ZD10×15	10.2	15	2	13	20	27
ZD12×18	12.35	18	3	16	20	27
ZD12×22	12.35	22	3	16	20	27
ZD12×23A	12.35	22.6	4.6	13.3	25	25
ZD12×23B	12.35	23	3	12	25	25
ZD13×19	13.35	19	3	18	20	27
ZD14×22	14.35	22	3.5	20	20	27
ZD14×27A	14.35	26.7	5.3	15.4	25	25
ZD16×24.3KP	16.35	24.3	5	36	20	-
ZD16×26.3KP	16.35	26.3	5	36	20	-
ZD19×29KP	19.3	29	5	95	20	-

Carburo Cementato per utensili estrazione carbone



左

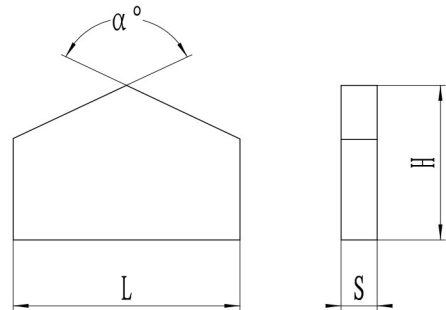
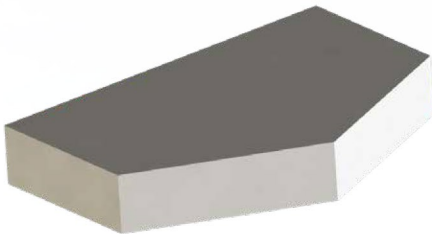


右

Unit:mm

tipo M10

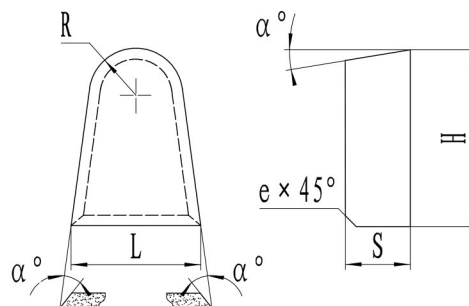
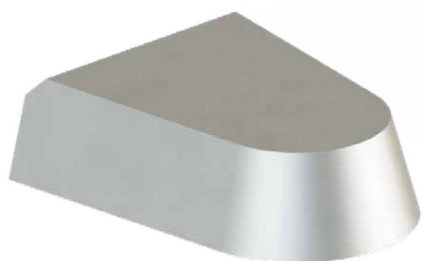
Tipo	Dimensione							
	L		H		S		b	
	Dim.	Tol.	Dim.	Tol.	Dim.	Tol.	Dim.	Tol.
M1011R	11	±0.3	12	±0.3	2.5	±0.2	4	±0.3
M1011L	11	±0.3	12	±0.3	2.5	±0.2	4	±0.3
M1014R	14	±0.3	19	±0.4	3.8	±0.2	4	±0.3
M1014L	14	±0.3	19	±0.4	3.8	±0.2	4	±0.3
M1015R	15	±0.4	22	±0.4	3	±0.3	5	±0.3
M1015L	15	±0.4	22	±0.4	3	±0.3	5	±0.3
M1018R	18	±0.4	22	±0.4	6	±0.3	5	±0.3
M1018L	18	±0.4	22	±0.4	6	±0.3	5	±0.3



Unit:mm

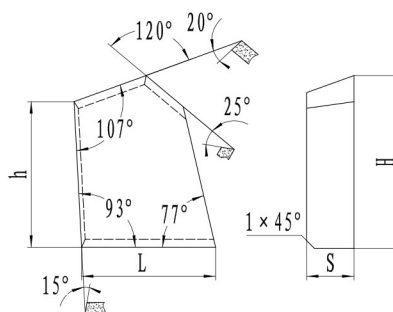
tipo M13

Tipo	Dimensione							α°
	L		H		S			
	Dim.	Tol.	Dim.	Tol.	Dim.	Tol.		
M1306	6	±0.2	5	±0.2	1.4	±0.2	130	
M1311	11	±0.4	9	±0.3	2	±0.2	130	
M1313	13	±0.4	10	±0.4	2.5	±0.3	130	
M1315	15	±0.4	10	±0.4	2.5	±0.3	130	
M1317	17	±0.4	13	±0.4	3	±0.3	130	
M1319	19	±0.4	13	±0.4	3	±0.3	130	
M1322	22	±0.5	15	±0.4	3.5	±0.3	130	
M1326	26	±0.5	18	±0.4	4.5	±0.3	130	
M1333	33	±0.5	22	±0.4	3	±0.3	130	
M1345	45	±0.6	27	±0.4	9	±0.3	130	



Unit:mm

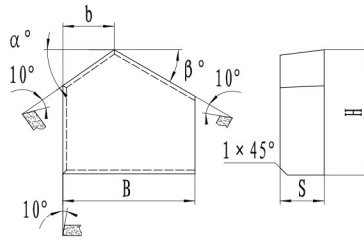
tipo M12									
Tipo	Dimensione								
	L		H		S		R	α°	e
	Dim.	Tol.	Dim.	Tol.	Dim.	Tol.			
M1216	16	± 0.4	22	± 0.4	7	± 0.3	6	15	1.0
M1220	20	± 0.4	27	± 0.4	8	± 0.3	7	15	1.0
M1222	22	± 0.4	22	± 0.4	7.5	± 0.3	9	10	1.5
M1230	30	± 0.4	35	± 0.4	12	± 0.3	8	8	1.0



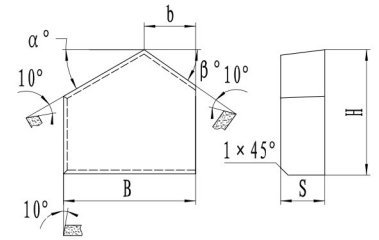
Unit:mm

tipo M11									
Tipo	Dimensione								
	L		H		h		S		
	Dim.	Tol.	Dim.	Tol.	Dim.	Tol.	Dim.	Tol.	
M1112	12	± 0.3	18	± 0.4	15.8	± 0.4	3	± 0.3	
M1113	13.4	± 0.3	26	± 0.4	23.8	± 0.4	3	± 0.3	

Carburo Cementato per utensili estrazione carbone



左

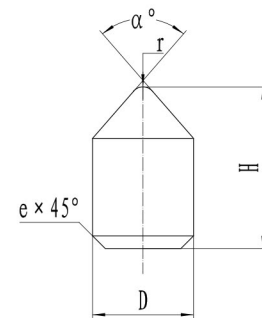


右

Unit:mm

tipo M14

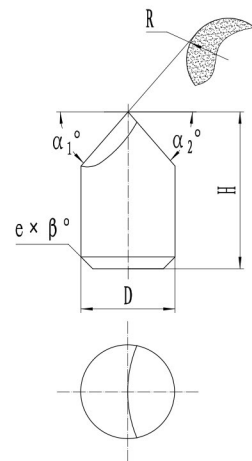
Tipo	Dimensione								
	b		H		S		b	α°	β°
	Dim.	Tol.	Dim.	Tol.	Dim.	Tol.			
M1427R	27.5	± 0.4	22	± 0.4	4.5	± 0.3	10	35	30
M1427L	27.5	± 0.4	22	± 0.4	4.5	± 0.3	10	35	30
M1445R	45	± 0.5	21	± 0.4	9	± 0.3	15	31	17
M1445L	45	± 0.5	21	± 0.4	9	± 0.3	15	31	17



Unit:mm

tipo M20

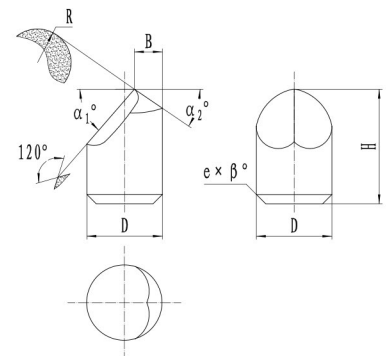
Tipo	Dimensione						
	D		H		r	α°	e
	Dim.	Tol.	Dim.	Tol.			
M2009	9	± 0.2	16	± 0.4	1	90	1
M2012A	12	± 0.2	18	± 0.4	1.5	82	1
M2012B	12	± 0.2	20	± 0.4	1.5	82	1.5
M2018	18	± 0.3	32	± 0.4	1.5	82	2



Unit:mm

tipo M21

Tipo	Dimensione									
	D		H		R		α_1°	α_2°	e	β°
	Dim.	Tol.	Dim.	Tol.	Dim.	Tol.				
M2110A	10	± 0.2	18	± 0.4	8	± 0.3	53	53	1	30
M2110B	10	± 0.2	20	± 0.4	5.5	± 0.3	50	58	1	45
M2112A	12	± 0.3	20	± 0.4	6.5	± 0.3	32	40	1	45
M2112B	12.5	± 0.4	25	± 0.4	10	± 0.35	46	46	1	30
M2115	15	± 0.4	25	± 0.4	11	± 0.35	45	45	2.5	30
M2118	18	± 0.4	20	± 0.4	14.4	± 0.4	37	37	1.5	45

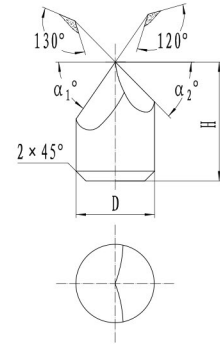


Unit:mm

tipo M22

Tipo	Dimensione										
	D		H		R		α_1°	α_2°	B	e	β°
	Dim.	Tol.	Dim.	Tol.	Dim.	Tol.					
M2210A	10	± 0.2	18	± 0.4	8	± 0.3	33	48	-	1	45
M2210B	10	± 0.2	20	± 0.4	8	± 0.3	33	48	-	1	45
M2212A	12	± 0.3	22	± 0.4	9	± 0.3	50	50	4	1	30
M2212B	12.5	± 0.4	25	± 0.4	9	± 0.35	55	45	4	1	30
M2214	14	± 0.4	22	± 0.4	10	± 0.35	49	55	-	2	45
M2216	16	± 0.4	28	± 0.4	8	± 0.3	50	50	5	2	30
M2218	18	± 0.4	21.5	± 0.4	11	± 0.35	52	52	-	2	30

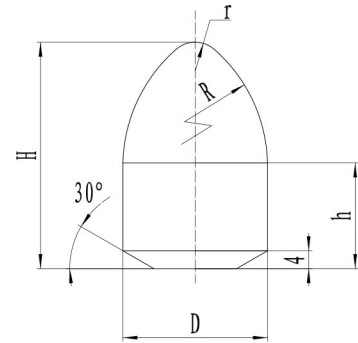
Carburo Cementato per utensili estrazione carbone



Unit:mm

tipo M23

Tipo	Dimensione					
	D		H		α_1°	α_2°
	Dim.	Tol.	Dim.	Tol.		
M2312A	12	± 0.2	22	± 0.4	56	48
M2312B	12.5	± 0.2	25	± 0.4	56	48
M2314A	14	± 0.2	22	± 0.4	56	48
M2314B	14	± 0.3	25	± 0.4	56	48

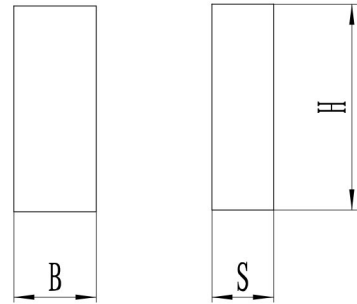
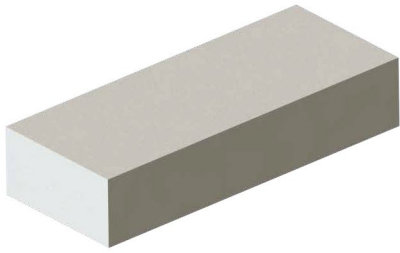


Unit:mm

tipo M24

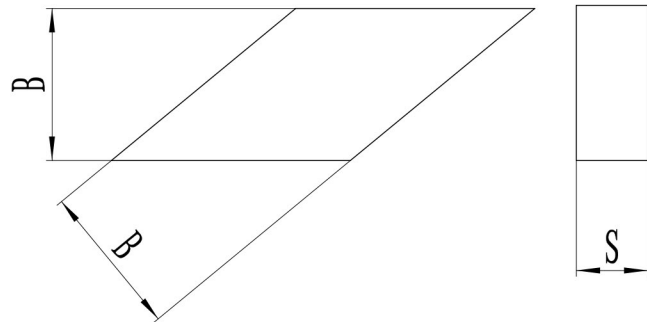
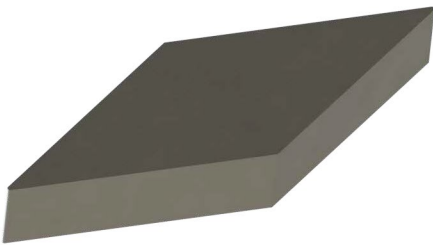
Tipo	Dimensione						
	D		H		h	R	r
	Dim.	Tol.	Dim.	Tol.			
M2417A	17	± 0.4	26.5	± 0.4	12	26	1.75
M2417B	17	± 0.4	26.5	± 0.4	15	26	1.75

Carburo Cementato per utensili di perforazione geologica



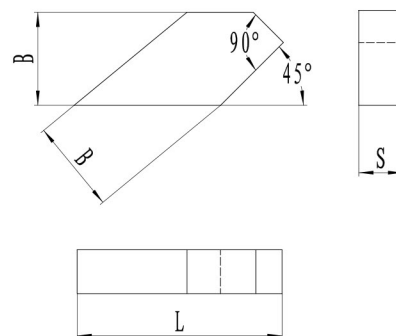
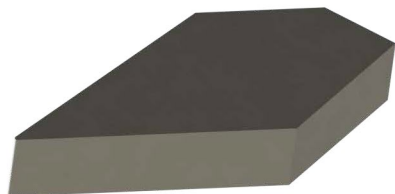
Unit:mm

tipo T10						
Tipo	Dimensione					
	H		B		S	$\alpha 2^\circ$
	Dim.	Tol.	Dim.	Tol.	Dim.	Tol.
T1003	15	± 0.4	3	± 0.30	1.5	± 0.2
T1006	20	± 0.5	6	± 0.35	4	± 0.3
T1008	20	± 0.5	8	± 0.35	6	± 0.3



Unit:mm

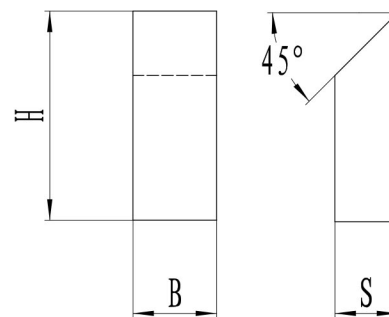
tipo T11				
Tipo	Dimensione			
	B		S	
	Dim.	Tol.	Dim.	Tol.
T1108	8.5	± 0.35	3	± 0.3
T1112	12	± 0.5	4	± 0.35



Unit:mm

tipo T12

Tipo	Dimensione					
	B		L		S	
	Dim.	Tol.	Dim.	Tol.	Dim.	Tol.
T1208	8.5	± 0.35	17.5	± 0.5	3	± 0.2
T1212	12	± 0.5	24	± 0.6	4	± 0.3

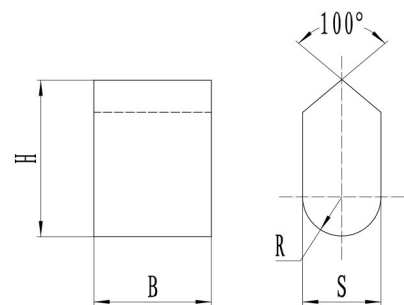
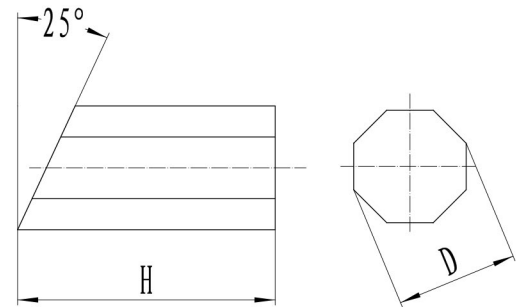
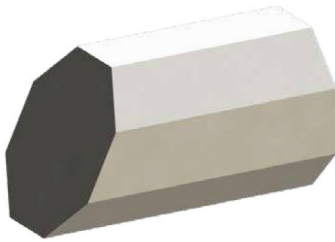
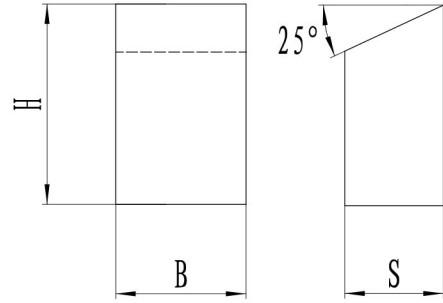


Unit:mm

tipo T20

Tipo	Dimensione					
	B		H		S	
	Dim.	Tol.	Dim.	Tol.	Dim.	Tol.
T2004	4	± 0.30	15	± 0.5	3.6	± 0.30
T2005	5	± 0.30	20	± 0.6	4	± 0.30
T2006	6	± 0.35	20	± 0.6	6	± 0.35
T2008	8	± 0.35	20	± 0.6	6	± 0.35
T2010	10	± 0.35	20	± 0.6	8	± 0.35

Carburo Cementato per utensili di perforazione geologica



Unit:mm

tipo T21

Tipo	Dimensione					
	B		H		S	
	Dim.	Tol.	Dim.	Tol.	Dim.	Tol.
T2105	5	±0.3	7	±0.35	3	±0.3
T2105A	5	±0.3	8	±0.35	5	±0.3
T2105B	5	±0.3	10	±0.35	5	±0.3
T2105C	5	±0.3	13	±0.5	5	±0.3
T2107	7.5	±0.35	10	±0.35	3	±0.3
T2107A	7	±0.35	20	±0.6	7	±0.35
T2108	8.5	±0.35	8	±0.35	3	±0.3
T2110	10	±0.35	14	±0.5	4	±0.3
T2114	14	±0.5	25	±0.6	12	±0.5

Unit:mm

tipo T30

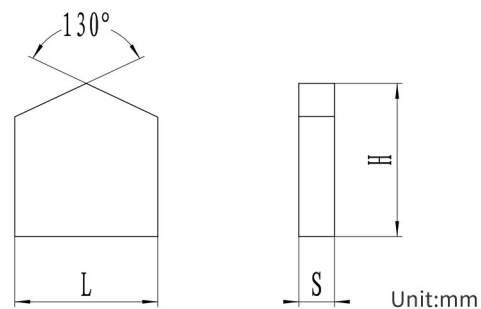
Tipo	Dimensione			
	D		H	
	Dim.	Tol.	Dim.	Tol.
T3005	5	±0.3	10	±0.35
T3007	7	±0.35	10	±0.35
T3007A	7	±0.35	15	±0.6
T3007B	7	±0.35	20	±0.5
T3010	10	±0.35	15	±0.5
T3010B	10	±0.35	16	±0.5
T3010A	10	±0.35	20	±0.6

Unit:mm

tipo T40

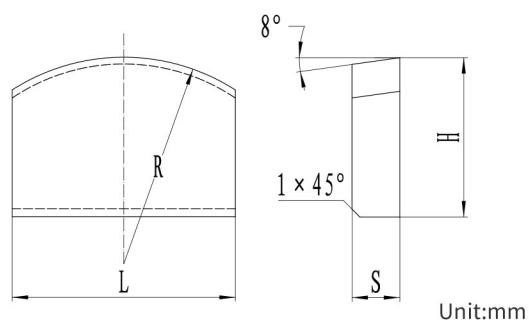
Tipo	Dimensione						
	B		H		S		R
	Dim.	Tol.	Dim.	Tol.	Dim.	Tol.	
T4010	10	±0.35	16	±0.5	8	±0.35	4
T4012	12	±0.5	16	±0.5	8	±0.35	4
T4014	14	±0.5	16	±0.5	8	±0.35	4
T4015	15	±0.5	20	±0.5	10	±0.35	5

Carburo Cementato per utensili di ingegneria edile



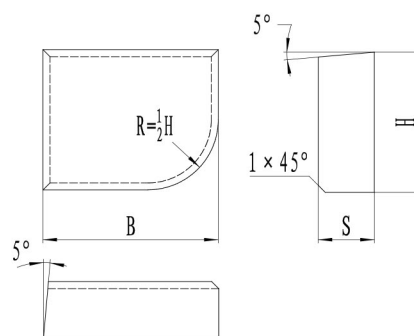
tipo J10

Tipo	Dimensione					
	B		H		S	
	Dim.	Tol.	Dim.	Tol.	Dim.	Tol.
J1006	6.5	±0.3	6	±0.3	1.9	±0.2
J1008	8.5	±0.3	7.5	±0.3	2.4	±0.2
J1010	10.5	±0.3	9	±0.35	2.5	±0.3
J1012	12.5	±0.3	10	±0.35	2.5	±0.3
J1014	14.5	±0.35	10	±0.35	2.5	±0.3
J1016	16.5	±0.35	13	±0.35	3	±0.3
J1018	18.5	±0.5	12	±0.35	3.5	±0.3
J1020	20.5	±0.5	14	±0.35	3.5	±0.3
J1022	22.5	±0.5	15	±0.35	4	±0.3
J1024	24.5	±0.5	18	±0.5	4.5	±0.3
J1026	26.5	±0.5	17	±0.5	4	±0.3
J1028	28.5	±0.5	22	±0.5	4.5	±0.3
J1030	30.5	±0.5	18.5	±0.5	4.8	±0.3



tipo J11

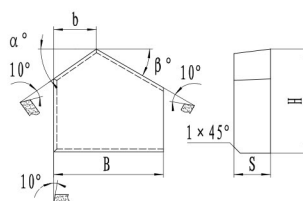
Tipo	Dimensione						
	L		H		S		R
	Dim.	Tol.	Dim.	Tol.	Dim.	Tol.	
J1118	18	±0.35	20	±0.5	6	±0.3	12
J1122	22	±0.5	20	±0.5	6	±0.3	17
J1128	28	±0.5	20	±0.5	6	±0.3	22
J1133	33	±0.5	25	±0.5	6	±0.3	26



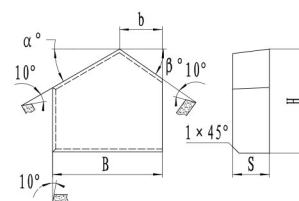
Unit:mm

tipo J21

Tipo	Dimensione					
	B		H		S	
	Dim.	Tol.	Dim.	Tol.	Dim.	Tol.
J2114	14	±0.3	16	±0.3	6	±0.3
J2118	18	±0.3	16	±0.3	6	±0.3
J2120	20	±0.35	12	±0.3	7	±0.3
J2115	25	±0.35	16	±0.3	8	±0.3



左



右

Unit:mm

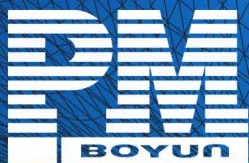
tipo J20

Tipo	Dimensione								
	B		H		S		b	α°	β°
	Dim.	Tol.	Dim.	Tol.	Dim.	Tol.			
J2034R	34	±0.35	22	±0.4	8	±0.3	14	22	20
J2034L	34	±0.35	22	±0.4	8	±0.3	14	22	20
J2040R	40	±0.5	21	±0.4	9	±0.3	15	20	20
J2040L	40	±0.5	21	±0.4	9	±0.3	15	20	20
J2043R	43	±0.5	22	±0.4	8	±0.3	18	20	20
J2043L	43	±0.5	22	±0.4	8	±0.3	18	20	20
J2044R	44	±0.5	25	±0.4	8	±0.3	18	20	20
J2044L	44	±0.5	25	±0.4	8	±0.3	18	20	20
J2045R	45	±0.5	27	±0.4	9	±0.3	15	20	20
J2045L	45	±0.5	27	±0.4	9	±0.3	15	20	20
J2046R	46	±0.5	30	±0.4	8	±0.3	18	20	20
J2046L	46	±0.5	30	±0.4	8	±0.3	18	20	20

Tabella Gradi prodotti Minerario

Tabella Gradi prodotti Minerario

Grado	Co	Dimen- sioni Grano WC	Durezza		Densità g/cm ³	Resistenza Flessione MPa	Modulo Elastico GPa	Coefficiente Espansione Termica 10 ⁻⁶ /°C	Applicazioni
	Co%		HRA	HV ₃₀					
G206	6	Medium	90.5	1460	14.9	3200	530	4.9	Adatto per denti in Metallo Duro, cuspidi tonde DTH e punte filettate. Adatto per formazioni rocciose medio-morbide e medio-dure.
G506	6	Coarse	88.0	1200	14.9	2500	530	4.9	Indicato per fresatura di pavimentazioni in cemento armato o asfalto.
G806	6	Extra Coarse	86.2	1040	14.9	2100	530	4.9	Adatto per frese rotative per roccia dura e carbone.
G707	7	Extra Coarse	86.3	1050	14.8	2200	520	5.0	Adatto per punte per minerale di ferro e frese per livellare il terreno.
G208	8	Medium	89.6	1350	14.7	2750	510	5.1	Adatto per punte a sfera e punte DTH per formazioni rocciose tenere, punte coniche a rulli e punte rotanti per giacimenti petroliferi e geologia.
G308	8	Medium	88.8	1270	14.7	2750	510	5.1	Adatto per punte perforazione triconiche, a sfera e perforazione DTH su roccia dura.
G608	8	Extra Coarse	86.8	1100	14.7	2400	510	5.1	Adatto a frese per tunnel, perforazione carbone, plettri rotanti per alberi e trincee, plettri per macchine agricole.
G510	10	Coarse	86.2	1040	14.5	2700	490	5.4	Adatto per frese rotanti e tronchesi per carbone.
G211	11	Medium	88.8	1270	14.4	2800	478	5.6	Adatto per la matrice di fogli compositi diamantati per giacimenti petroliferi e da taglio.
G311	11	Medium	88.0	1200	14.4	3200	478	5.6	Adatto per picconi rotanti battipalo, per trivelle a cono per formazioni rocciose medio-dure, trivelle a cono per giacimenti petroliferi e denti protettivi resistenti all'usura per benne da neve.
G411	11	Coarse	87.0	1120	14.4	2900	478	5.6	Adatto per formazioni rocciose medio-morbide e medio-dure, utilizzato per punte coniche per miniere, miniere di carbone, giacimenti petroliferi, carotaggi, punte rotanti e alesatori.
G512	12	Coarse	86.0	1030	14.3	2900	470	5.7	Adatto per teste di taglio per macchine con protezione tunnel e blocchi resistenti all'usura; alla preparazione di punte triconiche alta velocità ed alta pressione su formazioni rocciose medie e tenere.
G513	13	Coarse	85.6	1000	14.2	2900	460	5.8	Adatto per perforatrici da roccia per impieghi gravosi, punte da roccia rotative e teste da taglio a scudo sono adatte anche per la perforazione di giacimenti petroliferi e punte da miniera.
G215	15	Medium	87.3	1140	14.0	2800	430	6.3	Adatto per l'ingegneria di perforazione della roccia e la prospezione geologica.
G315	15	Medium	86.5	1080	14.1	3200	430	6.3	Adatto alla frantumazione di chiodi a colonna, lamina toi ad alta pressione e blocchi resistenti all'usura.
G415	15	Coarse	86.0	1030	14.1	3000	430	6.3	Adatto alla frantumazione con mulino a rulli alta pressione.
G515	15	Coarse	84.8	940	14.0	2800	430	6.3	Adatto per rulli per macchine TBM o Shield.
G218	18	Medium	86.5	1080	13.7	2800	410	6.6	Adatto per mulino a rulli ad alta pressione per la frantumazione del minerale nella produzione di cemento.
G318	18	Medium	85.5	990	13.8	2800	410	6.6	Adatto per la produzione di cemento, frantumazione perni laminatoi alta pressione e blocchi resistenti alla usura.
G320	20	Medium	84.5	920	13.6	2800	390	6.8	Adatto per la produzione di cemento, frantumazione perni laminatoi alta pressione e blocchi resistenti alla usura.



HUNAN BOYUN-DONGFANG POWDER METALLURGY CO., LTD.
Address: Boyun Innovation Industrial Zone, 346# Leifeng Ave,
Yueju Distric, Changsha, Hunan, China
Tel: 86-0731-88122808
Fax: 86-0731-88122998
Web: www.csu-pm.com
Email: bvdf@csu-pm.com