

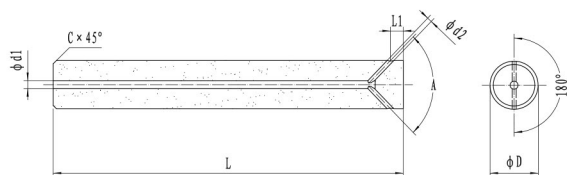
OUR PRODUCT

C A R B I D E

PREFORMS

— OUR PRODUCT —

Endmill Blanks with Axial Coolant Hole and 2 Lateral Exits

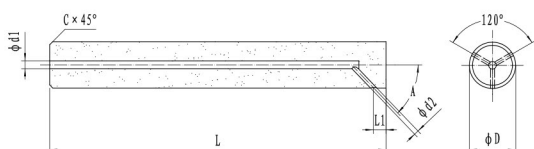


Endmill Blanks with Axial Coolant Hole and 2 Lateral Exits

D(mm)		L(mm)		L1(mm)		C(mm)		d1		d2	
6	h5	57	+1/0	3	±0.3	0.4	±0.1	1.20	±0.15	0.80	±0.15
8	h5	63	+1/0	4	±0.3	0.6	±0.1	1.60	±0.15	1.10	±0.15
10	h5	72	+1/0	5	±0.3	0.8	±0.1	2.00	±0.15	1.40	±0.15
12	h5	83	+1/0	6	±0.3	0.8	±0.1	2.20	±0.15	1.60	±0.15
14	h5	83	+1/0	7	±0.3	0.8	±0.1	2.40	±0.15	1.70	±0.15
16	h5	92	+1/0	8	±0.3	0.8	±0.1	2.60	±0.15	1.90	±0.15
18	h5	92	+1/0	9	±0.3	1.0	±0.1	2.80	±0.15	2.00	±0.15
20	h5	104	+1/0	10	±0.3	1.0	±0.1	3.00	±0.15	2.10	±0.15

● Stock ○ Limited stock ◇ Other grades and dimensions on request

Endmill Blanks with Axial Coolant Hole and 3 Lateral Exits

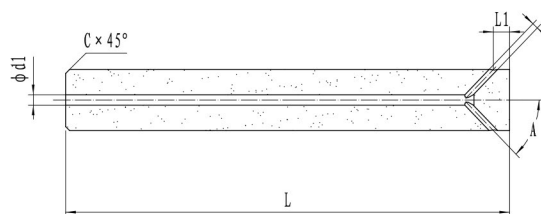


Endmill Blanks with Axial Coolant Hole and 3 Lateral Exits

D(mm)		L(mm)		L1(mm)		C(mm)		d1		d2	
6	h5	57	+1/0	3	±0.3	0.4	±0.1	1.20	±0.15	0.70	±0.15
8	h5	63	+1/0	4	±0.3	0.6	±0.1	1.60	±0.15	0.90	±0.15
10	h5	72	+1/0	5	±0.3	0.8	±0.1	2.00	±0.15	1.20	±0.15
12	h5	83	+1/0	6	±0.3	0.8	±0.1	2.20	±0.15	1.30	±0.15
14	h5	83	+1/0	7	±0.3	0.8	±0.1	2.40	±0.15	1.40	±0.15
16	h5	92	+1/0	8	±0.3	0.8	±0.1	2.60	±0.15	1.50	±0.15
18	h5	92	+1/0	9	±0.3	1.0	±0.1	2.80	±0.15	1.60	±0.15
20	h5	104	+1/0	10	±0.3	1.0	±0.1	3.00	±0.15	1.70	±0.15

● Stock ○ Limited stock ◇ Other grades and dimensions on request

Endmill Blanks with Axial Coolant Hole and 4 Lateral Exits

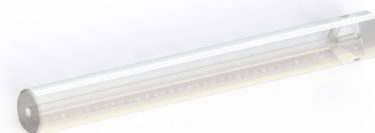
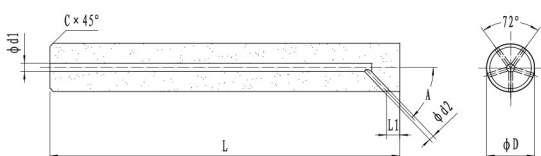


Endmill Blanks with Axial Coolant Hole and 4 Lateral Exits

D(mm)		L(mm)	L1(mm)	C(mm)	d1	d2
6	h5	57 +1/0	3 ±0.3	0.4 ±0.1	1.20 ±0.15	0.60 ±0.15
8	h5	63 +1/0	4 ±0.3	0.6 ±0.1	1.60 ±0.15	0.80 ±0.15
10	h5	72 +1/0	5 ±0.3	0.8 ±0.1	2.00 ±0.15	1.00 ±0.15
12	h5	83 +1/0	6 ±0.3	0.8 ±0.1	2.20 ±0.15	1.10 ±0.15
14	h5	83 +1/0	7 ±0.3	0.8 ±0.1	2.40 ±0.15	1.20 ±0.15
16	h5	92 +1/0	8 ±0.3	0.8 ±0.1	2.60 ±0.15	1.30 ±0.15
18	h5	92 +1/0	9 ±0.3	1.0 ±0.1	2.80 ±0.15	1.40 ±0.15
20	h5	104 +1/0	10 ±0.3	1.0 ±0.1	3.00 ±0.15	1.50 ±0.15

● Stock ○ Limited stock ◇ Other grades and dimensions on request

Endmill Blanks with Axial Coolant Hole and 5 Lateral Exits



Endmill Blanks with Axial Coolant Hole and 5 Lateral Exits

D(mm)		L(mm)	L1(mm)	C(mm)	d1	d2
6	h5	57 +1/0	3 ±0.3	0.4 ±0.1	1.20 ±0.15	0.50 ±0.15
8	h5	63 +1/0	4 ±0.3	0.6 ±0.1	1.60 ±0.15	0.70 ±0.15
10	h5	72 +1/0	5 ±0.3	0.8 ±0.1	2.00 ±0.15	0.90 ±0.15
12	h5	83 +1/0	6 ±0.3	0.8 ±0.1	2.20 ±0.15	1.00 ±0.15
14	h5	83 +1/0	7 ±0.3	0.8 ±0.1	2.40 ±0.15	1.10 ±0.15
16	h5	92 +1/0	8 ±0.3	0.8 ±0.1	2.60 ±0.15	1.20 ±0.15
18	h5	92 +1/0	9 ±0.3	1.0 ±0.1	2.80 ±0.15	1.30 ±0.15
20	h5	104 +1/0	10 ±0.3	1.0 ±0.1	3.00 ±0.15	1.40 ±0.15

● Stock ○ Limited stock ◇ Other grades and dimensions on request

