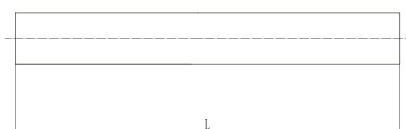


I NOSTRI PRODOTTI

C A R B U R O

CILINDRI PIENI

Cilindri grezzi L. 330

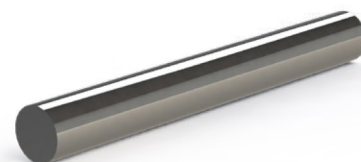
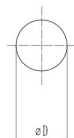


Cilindri grezzi L. 330

Diametro		Lunghezza		Grado						
D(mm)	Tolleranza	L(mm)	Tolleranza	ST20F	ST10F	ST25F	ST15D	ST11F	ST12F	ST12NF
1.5	+0.2~+0.4	310/330	+2.0~+6.0	○	○	○	○	○	○	○
2.0	+0.2~+0.4	310/330	+2.0~+6.0	○	○	○	○	○	○	○
2.5	+0.2~+0.4	310/330	+2.0~+6.0	○	○	○	○	○	○	○
3.0	+0.2~+0.4	310/330	+2.0~+6.0	●	○	○	○	○	○	○
3.5	+0.2~+0.4	310/330	+2.0~+6.0	○	○	○	○	○	○	○
4.0	+0.2~+0.4	310/330	+2.0~+6.0	●	○	○	○	○	○	○
4.5	+0.2~+0.4	310/330	+2.0~+6.0	○	○	○	○	○	○	○
5.0	+0.2~+0.4	310/330	+2.0~+6.0	●	○	○	○	○	○	○
5.5	+0.2~+0.4	310/330	+2.0~+6.0	○	○	○	○	○	○	○
6.0	+0.2~+0.4	310/330	+2.0~+6.0	●	○	○	○	○	○	○
6.5	+0.3~+0.55	310/330	+2.0~+6.0	○	○	○	○	○	○	○
7.0	+0.3~+0.55	310/330	+2.0~+6.0	●	○	○	○	○	○	○
7.5	+0.3~+0.55	310/330	+2.0~+6.0	○	○	○	○	○	○	○
8.0	+0.3~+0.55	310/330	+2.0~+6.0	●	○	○	○	○	○	○
8.5	+0.3~+0.55	310/330	+2.0~+6.0	○	○	○	○	○	○	○
9.0	+0.3~+0.55	310/330	+2.0~+6.0	●	○	○	○	○	○	○
9.5	+0.3~+0.55	310/330	+2.0~+6.0	○	○	○	○	○	○	○
10.0	+0.3~+0.55	310/330	+2.0~+6.0	●	○	○	○	○	○	○
10.5	+0.3~+0.55	310/330	+2.0~+6.0	○	○	○	○	○	○	○
11.0	+0.3~+0.55	310/330	+2.0~+6.0	●	○	○	○	○	○	○
12.0	+0.3~+0.55	310/330	+2.0~+6.0	●	○	○	○	○	○	○
13.0	+0.3~+0.65	310/330	+2.0~+6.0	●	○	○	○	○	○	○
14.0	+0.3~+0.65	310/330	+2.0~+6.0	●	○	○	○	○	○	○
15.0	+0.3~+0.65	310/330	+2.0~+6.0	●	○	○	○	○	○	○
16.0	+0.3~+0.65	310/330	+2.0~+6.0	●	○	○	○	○	○	○
17.0	+0.4~+0.8	310/330	+2.0~+6.0	●	○	○	○	○	○	○
18.0	+0.4~+0.8	310/330	+2.0~+6.0	●	○	○	○	○	○	○
19.0	+0.4~+0.8	310/330	+2.0~+6.0	●	○	○	○	○	○	○
20.0	+0.4~+0.8	310/330	+2.0~+6.0	●	○	○	○	○	○	○
21.0	+0.5~+0.9	310/330	+2.0~+6.0	●	○	○	○	○	○	○
22.0	+0.5~+0.9	310/330	+2.0~+6.0	●	○	○	○	○	○	○
23.0	+0.5~+0.9	310/330	+2.0~+6.0	○	○	○	○	○	○	○
24.0	+0.5~+0.9	310/330	+2.0~+6.0	●	○	○	○	○	○	○
25.0	+0.5~+0.9	310/330	+2.0~+6.0	●	○	○	○	○	○	○
26.0	+0.5~+0.9	310/330	+2.0~+6.0	●	○	○	○	○	○	○
27.0	+0.5~+0.9	310/330	+2.0~+6.0	○	○	○	○	○	○	○
28.0	+0.5~+0.9	310/330	+2.0~+6.0	●	○	○	○	○	○	○
29.0	+0.5~+0.9	310/330	+2.0~+6.0	○	○	○	○	○	○	○
30.0	+0.5~+0.9	310/330	+2.0~+6.0	●	○	○	○	○	○	○
32.0	+0.5~+0.9	310/330	+2.0~+6.0	●	○	○	○	○	○	○

●Disponibili a magazzino ○Disponibili a richiesta

Cilindri rettificati L. 330

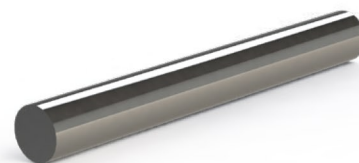
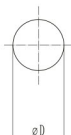
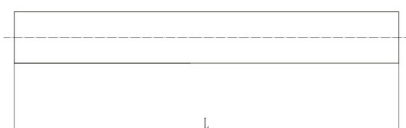


Cilindri rettificati L. 330

Diametro		Lunghezza		Grado						
D(mm)	Tolleranza	L(mm)	Tolleranza	ST20F	ST10F	ST25F	ST15D	ST11F	ST12F	ST12NF
1.5	h5	310/330	+2.0~+6.0	●	○	○	○	○	○	○
2.0	h5	310/330	+2.0~+6.0	●	○	○	○	○	○	○
2.5	h5	310/330	+2.0~+6.0	●	○	○	○	○	○	○
3.0	h5	310/330	+2.0~+6.0	●	●	●	○	○	○	○
3.5	h5	310/330	+2.0~+6.0	●	○	○	○	○	○	○
4.0	h5	310/330	+2.0~+6.0	●	●	●	○	○	○	○
4.5	h5	310/330	+2.0~+6.0	●	○	○	○	○	○	○
5.0	h5	310/330	+2.0~+6.0	●	●	●	○	○	○	○
5.5	h5	310/330	+2.0~+6.0	●	○	○	○	○	○	○
6.0	h5	310/330	+2.0~+6.0	●	●	●	○	○	○	○
6.5	h5	310/330	+2.0~+6.0	●	●	●	○	○	○	○
7.0	h5	310/330	+2.0~+6.0	●	○	○	○	○	○	○
7.5	h5	310/330	+2.0~+6.0	●	●	●	○	○	○	○
8.0	h5	310/330	+2.0~+6.0	●	○	○	○	○	○	○
8.5	h5	310/330	+2.0~+6.0	●	●	●	○	○	○	○
9.0	h5	310/330	+2.0~+6.0	●	○	○	○	○	○	○
9.5	h5	310/330	+2.0~+6.0	●	●	●	○	○	○	○
10.0	h5	310/330	+2.0~+6.0	●	○	○	○	○	○	○
10.5	h5	310/330	+2.0~+6.0	●	●	●	○	○	○	○
11.0	h5	310/330	+2.0~+6.0	●	●	●	○	○	○	○
12.0	h5	310/330	+2.0~+6.0	●	●	●	○	○	○	○
13.0	h5	310/330	+2.0~+6.0	●	●	●	○	○	○	○
14.0	h5	310/330	+2.0~+6.0	●	●	●	○	○	○	○
15.0	h5	310/330	+2.0~+6.0	●	●	●	○	○	○	○
16.0	h5	310/330	+2.0~+6.0	●	●	●	○	○	○	○
17.0	h5	310/330	+2.0~+6.0	●	●	●	○	○	○	○
18.0	h5	310/330	+2.0~+6.0	●	●	●	○	○	○	○
19.0	h5	310/330	+2.0~+6.0	●	●	●	○	○	○	○
20.0	h5	310/330	+2.0~+6.0	●	●	●	○	○	○	○
21.0	h5	310/330	+2.0~+6.0	●	●	●	○	○	○	○
22.0	h5	310/330	+2.0~+6.0	●	●	●	○	○	○	○
23.0	h5	310/330	+2.0~+6.0	●	●	●	○	○	○	○
24.0	h5	310/330	+2.0~+6.0	●	●	●	○	○	○	○
25.0	h5	310/330	+2.0~+6.0	●	●	●	○	○	○	○
26.0	h5	310/330	+2.0~+6.0	●	●	●	○	○	○	○
27.0	h5	310/330	+2.0~+6.0	●	●	●	○	○	○	○
28.0	h5	310/330	+2.0~+6.0	●	●	●	○	○	○	○
29.0	h5	310/330	+2.0~+6.0	●	●	●	○	○	○	○
30.0	h5	310/330	+2.0~+6.0	●	●	●	○	○	○	○
32.0	h5	310/330	+2.0~+6.0	●	●	●	○	○	○	○

●Disponibili a magazzino ○Disponibili a richiesta

Cilindri in lunghezze fisse rettificati

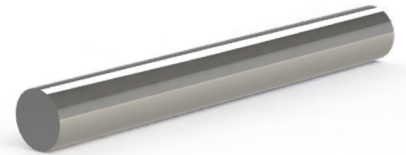
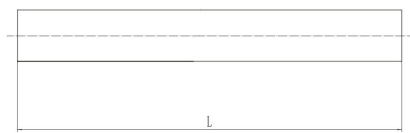


Cilindri lunghezze fisse rettificati

Diametro		Lunghezza	Grado		
D(mm)	Tolleranza	L(mm)	ST20F	ST10F	ST25F
3.0	h5/h4	40	○	○	○
3.0	h5/h4	50	●	○	○
3.0	h5/h4	52	○	○	○
3.0	h5/h4	60	●	○	○
3.0	h5/h4	100	●	○	○
4.0	h5/h4	50	●	○	○
4.0	h5/h4	60	●	○	○
4.0	h5/h4	75	○	○	○
4.0	h5/h4	100	●	○	○
5.0	h5/h4	50	●	○	○
5.0	h5/h4	51	○	○	○
5.0	h5/h4	60	○	○	○
5.0	h5/h4	75	○	○	○
5.0	h5/h4	100	●	○	○
6.0	h5/h4	50	●	○	○
6.0	h5/h4	51	○	○	○
6.0	h5/h4	55	○	○	○
6.0	h5/h4	60	●	○	○
6.0	h5/h4	65	●	○	○
6.0	h5/h4	70	●	○	○
6.0	h5/h4	80	●	○	○
6.0	h5/h4	100	○	○	○
6.0	h5/h4	150	○	○	○
8.0	h5/h4	60	●	○	○
8.0	h5/h4	70	●	○	○
8.0	h5/h4	80	●	○	○
8.0	h5/h4	90	●	○	○
8.0	h5/h4	100	●	○	○
10.0	h5/h4	70	●	○	○
10.0	h5/h4	72	●	○	○
10.0	h5/h4	75	●	○	○
10.0	h5/h4	80	●	○	○
10.0	h5/h4	100	●	○	○
10.0	h5/h4	110	○	○	○
12.0	h5/h4	74	○	○	○
12.0	h5/h4	80	●	○	○
12.0	h5/h4	83	●	○	○
12.0	h5/h4	85	●	○	○
12.0	h5/h4	100	●	○	○
14.0	h5/h4	84	○	○	○
14.0	h5/h4	100	●	○	○
14.0	h5/h4	101	○	○	○
14.0	h5/h4	150	●	○	○
16.0	h5/h4	100	●	○	○
16.0	h5/h4	120	●	○	○
16.0	h5/h4	130	●	○	○
16.0	h5/h4	150	●	○	○
18.0	h5/h4	100	●	○	○
18.0	h5/h4	130	●	○	○
18.0	h5/h4	150	●	○	○
20.0	h5/h4	100	●	○	○
20.0	h5/h4	130	●	○	○
20.0	h5/h4	150	●	○	○

● Disponibili a magazzino ○ Disponibili a richiesta

Cilindri rettificati L. 330 - pollici



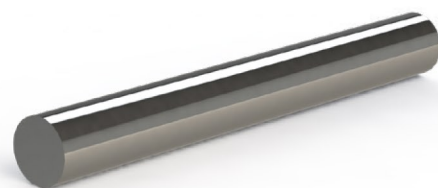
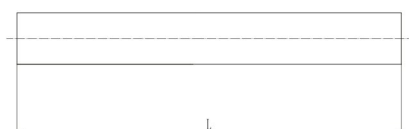
Cilindri rettificati L. 330 - pollici

Diametro		Lunghezza		Grado		
D(inch)	Tolleranza	L(inch)	Tolleranza	ST20F	ST25F	ST12F
1/8	h5	13-1/14	+0.08~+0.24	●	○	○
3/16	h5	13-1/14	+0.08~+0.24	●	○	○
1/4	h5	13-1/14	+0.08~+0.24	●	○	○
5/16	h5	13-1/14	+0.08~+0.24	●	○	○
3/8	h5	13-1/14	+0.08~+0.24	●	○	○
7/16	h5	13-1/14	+0.08~+0.24	●	○	○
1/2	h5	13-1/14	+0.08~+0.24	●	○	○
9/16	h5	13-1/14	+0.08~+0.24	●	○	○
5/8	h5	13-1/14	+0.08~+0.24	●	○	○
11/16	h5	13-1/14	+0.08~+0.24	●	○	○
3/4	h5	13-1/14	+0.08~+0.24	●	○	○
7/8	h5	13-1/14	+0.08~+0.24	●	○	○
15/16	h5	13-1/14	+0.08~+0.24	●	○	○
1	h5	13-1/14	+0.08~+0.24	●	○	○

●Disponibili a magazzino

○Disponibili a richiesta

Cilindri in lunghezze fisse rettificati - pollici



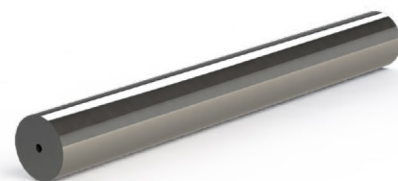
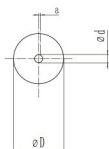
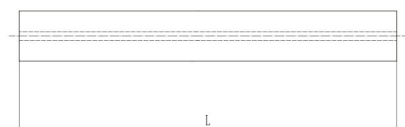
Cilindri in lunghezze fisse rettificati - pollici

Diametro		Lunghezza		Grado		
D(inch)	Tolleranza	L(inch)	ST20F	ST25F	ST12F	
1/8	h5/h4	1-1/2	○	○	○	
1/8	h5/h4	2	○	○	○	
1/8	h5/h4	2-1/2	○	○	○	
1/8	h5/h4	3	○	○	○	
3/16	h5/h4	2	○	○	○	
3/16	h5/h4	3	○	○	○	
1/4	h5/h4	2	○	○	○	
1/4	h5/h4	2-1/2	○	○	○	
1/4	h5/h4	3	○	○	○	
1/4	h5/h4	4	○	○	○	
5/16	h5/h4	2-1/2	○	○	○	
3/8	h5/h4	2-1/2	○	○	○	
3/8	h5/h4	3	○	○	○	
1/2	h5/h4	2-1/2	○	○	○	
1/2	h5/h4	3	○	○	○	
1/2	h5/h4	4	○	○	○	
5/8	h5/h4	3-1/2	○	○	○	
3/4	h5/h4	4	○	○	○	
3/4	h5/h4	5	○	○	○	
1	h5/h4	4	○	○	○	

●Disponibili a magazzino

○Disponibili a richiesta

Cilindri rettificati con 1 foro di lubrificazione



Cilindri rettificati con 1 foro di lubrificazione

Diametro		Lunghezza		Foro		amax(mm)	Grado	
D(mm)	Tolleranza	L(mm)	Tolleranza	d(mm)	Tolleranza		ST20F	ST15D
4.0	h5	330	+2.0~+6.0	0.60	±0.10	0.10	○	●
6.0	h5	330	+2.0~+6.0	1.00	±0.15	0.15	○	●
8.0	h5	330	+2.0~+6.0	1.30	±0.15	0.15	○	●
10.0	h5	330	+2.0~+6.0	2.00	±0.15	0.20	○	●
12.0	h5	330	+2.0~+6.0	2.00	±0.15	0.30	○	●
12.0	h5	330	+2.0~+6.0	3.00	±0.15	0.30	○	●
13.0	h5	330	+2.0~+6.0	2.00	±0.15	0.34	○	●
14.0	h5	330	+2.0~+6.0	2.00	±0.15	0.37	○	●
14.0	h5	330	+2.0~+6.0	3.00	±0.15	0.37	○	●
16.0	h5	330	+2.0~+6.0	2.00	±0.2	0.40	○	●
16.0	h5	330	+2.0~+6.0	3.00	±0.2	0.40	○	●
18.0	h5	330	+2.0~+6.0	3.00	±0.2	0.50	○	●
20.0	h5	330	+2.0~+6.0	2.00	±0.25	0.50	○	●
20.0	h5	330	+2.0~+6.0	3.00	±0.25	0.50	○	●
22.0	h5	330	+2.0~+6.0	3.00	±0.25	0.50	○	●
24.0	h5	330	+2.0~+6.0	4.00	±0.25	0.50	○	●
25.0	h5	330	+2.0~+6.0	4.00	±0.25	0.50	○	●
28.0	h5	330	+2.0~+6.0	4.00	±0.25	0.50	○	●
30.0	h5	330	+2.0~+6.0	5.00	±0.25	0.50	○	●
32.0	h5	330	+2.0~+6.0	5.00	±0.25	0.50	○	●

●Disponibili a magazzino

○Disponibili a richiesta

Cilindri rettificati con 2 fori di lubrificazione paralleli

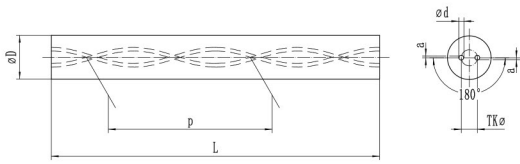


Cilindri rettificati con 2 fori di lubrificazione paralleli

Diametro		Lunghezza		Interasse Fori		Diam. Fori		amax(mm)	Grado	
D(mm)	Tolleranza	L(mm)	Tolleranza	TK(mm)	Tolleranza	d(mm)	Tolleranza		ST20F	ST15D
4.0	h5	330	+2.0~+6.0	1.80	+0/-0.15	0.80	±0.10	0.10	○	●
5.0	h5	330	+2.0~+6.0	2.00	+0/-0.15	0.80	±0.10	0.13	○	●
6.0	h5	330	+2.0~+6.0	1.50	+0/-0.20	0.90	±0.10	0.15	○	●
6.0	h5	330	+2.0~+6.0	3.00	+0/-0.20	1.00	±0.10	0.15	○	●
7.0	h5	330	+2.0~+6.0	3.50	+0/-0.20	1.00	±0.15	0.15	○	●
8.0	h5	330	+2.0~+6.0	2.60	+0/-0.30	1.00	±0.10	0.15	○	●
8.0	h5	330	+2.0~+6.0	4.00	+0/-0.30	1.00	±0.15	0.15	○	●
9.0	h5	330	+2.0~+6.0	4.00	+0/-0.30	1.40	±0.10	0.20	○	●
10.0	h5	330	+2.0~+6.0	3.50	+0/-0.30	1.20	±0.10	0.20	○	●
10.0	h5	330	+2.0~+6.0	5.00	+0/-0.30	1.40	±0.15	0.20	○	●
11.0	h5	330	+2.0~+6.0	5.00	+0/-0.30	1.40	±0.15	0.28	○	●
12.0	h5	330	+2.0~+6.0	3.50	+0/-0.30	1.20	±0.15	0.30	○	●
12.0	h5	330	+2.0~+6.0	6.00	+0/-0.30	1.75	±0.15	0.30	○	●
13.0	h5	330	+2.0~+6.0	6.00	+0/-0.30	1.75	±0.15	0.34	○	●
14.0	h5	330	+2.0~+6.0	5.00	+0/-0.30	1.50	±0.15	0.37	○	●
14.0	h5	330	+2.0~+6.0	7.00	+0/-0.30	1.75	±0.15	0.37	○	●
15.0	h5	330	+2.0~+6.0	7.00	+0/-0.30	2.00	±0.15	0.40	○	●
16.0	h5	330	+2.0~+6.0	5.00	+0/-0.30	1.50	±0.15	0.40	○	●
16.0	h5	330	+2.0~+6.0	8.00	+0/-0.30	2.00	±0.20	0.40	○	●
17.0	h5	330	+2.0~+6.0	8.00	+0/-0.30	2.00	±0.20	0.47	○	●
18.0	h5	330	+2.0~+6.0	9.00	+0/-0.30	2.00	±0.20	0.50	○	●
19.0	h5	330	+2.0~+6.0	9.00	+0/-0.30	2.00	±0.20	0.50	○	●
20.0	h5	330	+2.0~+6.0	10.00	+0/-0.40	2.50	±0.25	0.50	○	●
21.0	h5	330	+2.0~+6.0	10.00	+0/-0.40	2.50	±0.25	0.50	○	●
22.0	h5	330	+2.0~+6.0	11.00	+0/-0.40	2.50	±0.25	0.50	○	●
23.0	h5	330	+2.0~+6.0	11.00	+0/-0.40	2.50	±0.25	0.50	○	●
24.0	h5	330	+2.0~+6.0	12.00	+0/-0.50	3.00	±0.25	0.50	○	●
25.0	h5	330	+2.0~+6.0	12.00	+0/-0.50	3.00	±0.25	0.50	○	●
28.0	h5	330	+2.0~+6.0	14.00	+0/-0.50	3.00	±0.25	0.50	○	●
30.0	h5	330	+2.0~+6.0	14.00	+0/-0.50	3.00	±0.25	0.50	○	●
32.0	h5	330	+2.0~+6.0	14.00	+0/-0.50	3.00	±0.25	0.50	○	●

●Disponibili a magazzino ○Disponibili a richiesta

Cilindri rettificati con 2 fori di lubrificazione a 30°



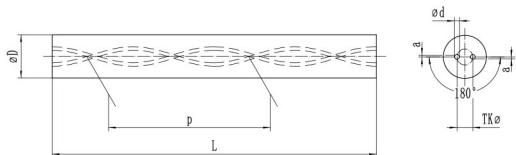
Cilindri rettificati con 2 fori di lubrificazione a 30°

Diametro		Lunghezza		Interasse Fori		Diam. Fori		"P" (±0.5°)	amax(mm)	Grado	
D(mm)	Tolleranza	L(mm)	Tolleranza	TK(mm)	Tolleranza	d(mm)	Tolleranza			ST20F	ST15D
4.0	h5	330	+2.0~+6.0	2.20	+0/-0.20	0.60	±0.10	21.77 -0.43/+0.45	0.10	○	●
5.0	h5	330	+0.0~+5.0	2.60	+0/-0.40	0.70	±0.10	27.21 -0.54/+0.56	0.13	○	●
6.0	h5	330	+2.0~+6.0	1.90	+0/-0.20	0.70	±0.10	32.65 -0.65/+0.67	0.15	○	●
6.0	h5	330	+2.0~+6.0	2.60	+0/-0.40	0.70	±0.10	32.65 -0.65/+0.67	0.15	○	●
7.0	h5	330	+2.0~+6.0	3.70	+0/-0.40	1.00	±0.15	38.09 -0.76/+0.78	0.15	○	●
8.0	h5	330	+2.0~+6.0	3.30	+0/-0.40	1.00	±0.15	43.53 -0.86/+0.89	0.15	○	●
8.0	h5	330	+2.0~+6.0	4.00	+0/-0.40	1.00	±0.15	43.53 -0.86/+0.89	0.15	○	●
9.0	h5	330	+2.0~+6.0	4.80	+0/-0.60	1.40	±0.15	48.97 -0.97/+1.00	0.20	○	●
10.0	h5	330	+2.0~+6.0	2.70	+0/-0.40	0.80	±0.10	54.41 -1.08/+1.11	0.20	○	●
10.0	h5	330	+2.0~+6.0	4.80	+0/-0.60	1.40	±0.15	54.41 -1.08/+1.11	0.20	○	●
11.0	h5	330	+2.0~+6.0	5.30	+0/-0.80	1.40	±0.15	59.86 -1.19/+1.22	0.28	○	●
12.0	h5	330	+2.0~+6.0	3.70	+0/-0.40	1.00	±0.15	65.30 -1.30/+1.34	0.30	○	●
12.0	h5	330	+2.0~+6.0	5.40	+0/-0.60	1.50	±0.15	65.30 -1.30/+1.34	0.30	○	●
12.0	h5	330	+2.0~+6.0	6.25	+0/-0.80	1.40	±0.15	65.30 -1.30/+1.34	0.30	○	●
13.0	h5	330	+2.0~+6.0	6.50	+0/-0.80	1.75	±0.20	70.74 -1.40/+1.45	0.34	○	●
14.0	h5	330	+2.0~+6.0	4.80	+0/-0.60	1.30	±0.15	76.18 -1.51/+1.56	0.37	○	●
14.0	h5	330	+2.0~+6.0	6.00	+0/-0.60	1.60	±0.20	76.18 -1.51/+1.56	0.37	○	●
14.0	h5	330	+2.0~+6.0	7.10	+0/-0.80	1.75	±0.20	76.18 -1.51/+1.56	0.37	○	●
15.0	h5	330	+2.0~+6.0	7.70	+0/-0.80	1.75	±0.20	81.62 -1.62/+1.67	0.40	○	●
16.0	h5	330	+2.0~+6.0	4.90	+0/-0.60	1.40	±0.15	87.06 -1.73/+1.78	0.40	○	●
16.0	h5	330	+2.0~+6.0	5.70	+0/-0.60	1.50	±0.15	87.06 -1.73/+1.78	0.40	○	●
16.0	h5	330	+2.0~+6.0	8.30	+0/-0.80	1.75	±0.20	87.06 -1.73/+1.78	0.40	○	●
17.0	h5	330	+2.0~+6.0	8.90	+0/-0.80	1.75	±0.20	92.50 -1.84/+1.89	0.47	○	●
18.0	h5	330	+2.0~+6.0	6.30	+0/-0.80	1.70	±0.20	97.95 -1.94/+2.00	0.50	○	●
18.0	h5	330	+2.0~+6.0	9.55	+0/-0.80	2.00	±0.25	97.95 -1.94/+2.00	0.50	○	●
19.0	h5	330	+2.0~+6.0	10.10	+0/-0.80	2.00	±0.25	103.39 -2.05/+2.12	0.50	○	●
20.0	h5	330	+2.0~+6.0	6.00	+0/-0.60	1.00	±0.15	108.83 -2.16/+2.23	0.50	○	●
20.0	h5	330	+2.0~+6.0	10.40	+0/-1.00	2.00	±0.25	108.83 -2.16/+2.23	0.50	○	●

● Disponibili a magazzino

○ Disponibili a richiesta

Cilindri rettificati 2 fori di lubrificazione 40°



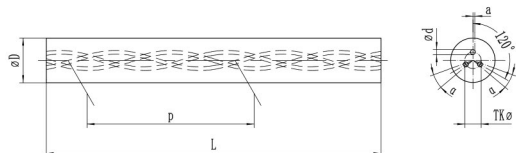
Cilindri rettificati 2 fori di lubrificazione 40°

Diametro		Lunghezza		Interasse Fori		Diam. Fori		"P (±0.5°)"	amax(mm)	Grado	
D(mm)	Tolleranza	L(mm)	Tolleranza	TK(mm)	Tolleranza	d(mm)	Tolleranza			ST20F	ST15D
6.0	h5	330	+2.0~+6.0	1.40	+0/-0.40	0.40	±0.15	22.46 -0.39/+0.40	0.15	○	●
6.0	h5	330	+2.0~+6.0	2.20	+0/-0.40	0.50	±0.15	22.46 -0.39/+0.40	0.15	○	●
7.0	h5	330	+2.0~+6.0	2.40	+0/-0.40	0.70	±0.15	26.21 -0.46/+0.47	0.15	○	●
8.0	h5	330	+2.0~+6.0	1.70	+0/-0.20	0.40	±0.10	29.95 -0.53/+0.54	0.15	○	●
8.0	h5	330	+2.0~+6.0	2.70	+0/-0.60	0.65	±0.15	29.95 -0.53/+0.54	0.15	○	●
9.0	h5	330	+2.0~+6.0	3.20	+0/-0.60	0.75	±0.15	33.70 -0.59/+0.60	0.20	○	●
10.0	h5	330	+2.0~+6.0	2.10	+0/-0.20	0.50	±0.10	37.44 -0.66/+0.67	0.20	○	●
10.0	h5	330	+2.0~+6.0	3.50	+0/-0.80	0.80	±0.15	37.44 -0.66/+0.67	0.20	○	●
11.0	h5	330	+2.0~+6.0	3.70	+0/-0.80	0.80	±0.15	41.18 -0.72/+0.74	0.28	○	●
12.0	h5	330	+2.0~+6.0	2.50	+0/-0.40	0.60	±0.10	44.93 -0.79/+0.80	0.30	○	●
12.0	h5	330	+2.0~+6.0	4.20	+0/-0.80	0.90	±0.20	44.93 -0.79/+0.80	0.30	○	●
13.0	h5	330	+2.0~+6.0	4.40	+0/-0.80	0.90	±0.15	48.67 -0.85/+0.87	0.34	○	●
14.0	h5	330	+2.0~+6.0	2.90	+0/-0.40	0.70	±0.10	52.42 -0.92/+0.94	0.37	○	●
14.0	h5	330	+2.0~+6.0	4.70	+0/-0.80	1.00	±0.20	52.42 -0.92/+0.94	0.37	○	●
15.0	h5	330	+2.0~+6.0	5.10	+0/-0.80	1.10	±0.20	56.16 -0.99/+1.01	0.40	○	●
16.0	h5	330	+2.0~+6.0	3.30	+0/-0.40	0.80	±0.10	59.90 -1.05/+1.07	0.40	○	●
16.0	h5	330	+2.0~+6.0	5.50	+0/-0.80	1.20	±0.20	59.90 -1.05/+1.07	0.40	○	●
18.0	h5	330	+2.0~+6.0	3.70	+0/-0.40	0.90	±0.15	67.39 -1.18/+1.21	0.50	○	●
18.0	h5	330	+2.0~+6.0	6.30	+0/-0.80	1.40	±0.25	67.39 -1.18/+1.21	0.50	○	●
20.0	h5	330	+2.0~+6.0	4.10	+0/-0.40	1.00	±0.15	74.88 -1.31/+1.34	0.50	○	●
20.0	h5	330	+2.0~+6.0	7.10	+0/-1.00	1.50	±0.25	74.88 -1.31/+1.34	0.50	○	●

●Disponibili a magazzino

○Disponibili a richiesta

Cilindri rettificati con 3 fori di lubrificazione 30°



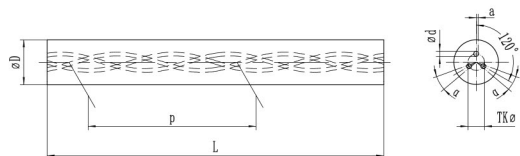
Cilindri rettificati con 3 fori di lubrificazione 30°

Diametro		Lunghezza		Interasse Fori		Diam. Fori		"P" (±0.5°)	αmax- (mm)	Grado	
D(mm)	Tolleranza	L(mm)	Tolleranza	TK(mm)	Tolleranza	d(mm)	Tolleranza			ST20F	ST15D
6.0	h5	330	+2.0~+6.0	2.90	+0/0.30	0.50	±0.10	32.65 -0.65/+0.67	±4°	○	●
8.0	h5	330	+2.0~+6.0	4.00	+0/0.30	0.70	±0.10	43.53 -0.86/+0.89	±4°	○	●
10.0	h5	330	+2.0~+6.0	5.10	+0/0.30	0.85	±0.15	54.41 -1.08/+1.11	±4°	○	●
12.0	h5	330	+2.0~+6.0	6.30	+0/0.50	1.10	±0.15	65.30 -1.30/+1.34	±4°	○	●
14.0	h5	330	+2.0~+6.0	7.30	+0/0.50	1.40	±0.15	76.18 -1.51/+1.56	±4°	○	●
16.0	h5	330	+2.0~+6.0	8.30	+0/0.50	1.60	±0.20	87.06 -1.73/+1.78	±4°	○	●
18.0	h5	330	+2.0~+6.0	9.50	+0/0.50	1.70	±0.20	97.95 -1.94/+2.00	±4°	○	●
20.0	h5	330	+2.0~+6.0	10.20	+0/0.50	1.90	±0.25	108.83 -2.16/+2.23	±4°	○	●

●Disponibili a magazzino

○Disponibili a richiesta

Cilindri rettificati con 3 fori di lubrificazione 40°



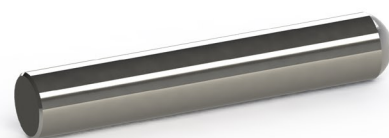
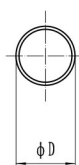
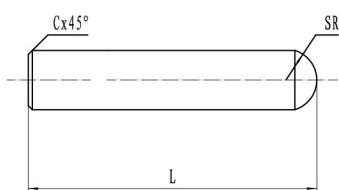
Cilindri rettificati con 3 fori di lubrificazione 40°

Diametro		Lunghezza		Interasse Fori		Diam. Fori		"P (±0.5°)"	αmax- (mm)	Grado	
D(mm)	Tolleranza	L(mm)	Tolleranza	TK(mm)	Tolleranza	d(mm)	Tolleranza			ST20F	ST15D
6.0	h5	330	+2.0~+6.0	2.20	+0/-0.30	0.50	±0.15	22.46 -0.39/+0.40	±4°	○	●
8.0	h5	330	+2.0~+6.0	2.70	+0/-0.30	0.65	±0.15	29.95 -0.53/+0.54	±4°	○	●
10.0	h5	330	+2.0~+6.0	3.50	+0/-0.30	0.80	±0.15	37.44 -0.66/+0.67	±4°	○	●
12.0	h5	330	+2.0~+6.0	4.20	+0/-0.50	0.90	±0.20	44.93 -0.79/+0.80	±4°	○	●
14.0	h5	330	+2.0~+6.0	4.70	+0/-0.50	1.00	±0.20	52.42 -0.92/+0.94	±4°	○	●
16.0	h5	330	+2.0~+6.0	5.50	+0/-0.50	1.20	±0.20	59.90 -1.05/+1.07	±4°	○	●
18.0	h5	330	+2.0~+6.0	6.30	+0/-0.50	1.40	±0.25	67.39 -1.18/+1.21	±4°	○	●
20.0	h5	330	+2.0~+6.0	7.10	+0/-0.70	1.50	±0.25	74.88 -1.31/+1.34	±4°	○	●

●Disponibili a magazzino

○Disponibili a richiesta

Cilindri rettificati con testa sferica



Cilindri rettificati con testa sferica

D(mm)		L(mm)		C(mm)		SR	
6	h5	57	+1/0	0.5	±0.1	3.15	+0.38/0
8	h5	63	+1/0	0.6	±0.1	4.19	+0.38/0
10	h5	72	+1/0	0.6	±0.1	5.24	+0.38/0
12	h5	83	+1/0	0.8	±0.1	6.29	+0.38/0
12	h5	97	+1/0	0.8	±0.1	6.29	+0.38/0
14	h5	83	+1/0	0.8	±0.1	7.34	+0.38/0
14	h5	90	+1/0	0.8	±0.1	7.34	+0.38/0
14	h5	100	+1/0	0.8	±0.1	7.34	+0.38/0
16	h5	92	+1/0	0.8	±0.1	8.39	+0.38/0
16	h5	108	+1/0	0.8	±0.1	8.39	+0.38/0
16	h5	110	+1/0	0.8	±0.1	8.39	+0.38/0
18	h5	92	+1/0	0.8	±0.1	9.44	+0.38/0
18	h5	100	+1/0	0.8	±0.1	9.44	+0.38/0
18	h5	120	+1/0	0.8	±0.1	9.44	+0.38/0
20	h5	100	+1/0	1.0	±0.1	10.49	+0.38/0
20	h5	104	+1/0	1.0	±0.1	10.49	+0.38/0
20	h5	110	+1/0	1.0	±0.1	10.49	+0.38/0
20	h5	120	+1/0	1.0	±0.1	10.49	+0.38/0

● Disponibili a magazzino

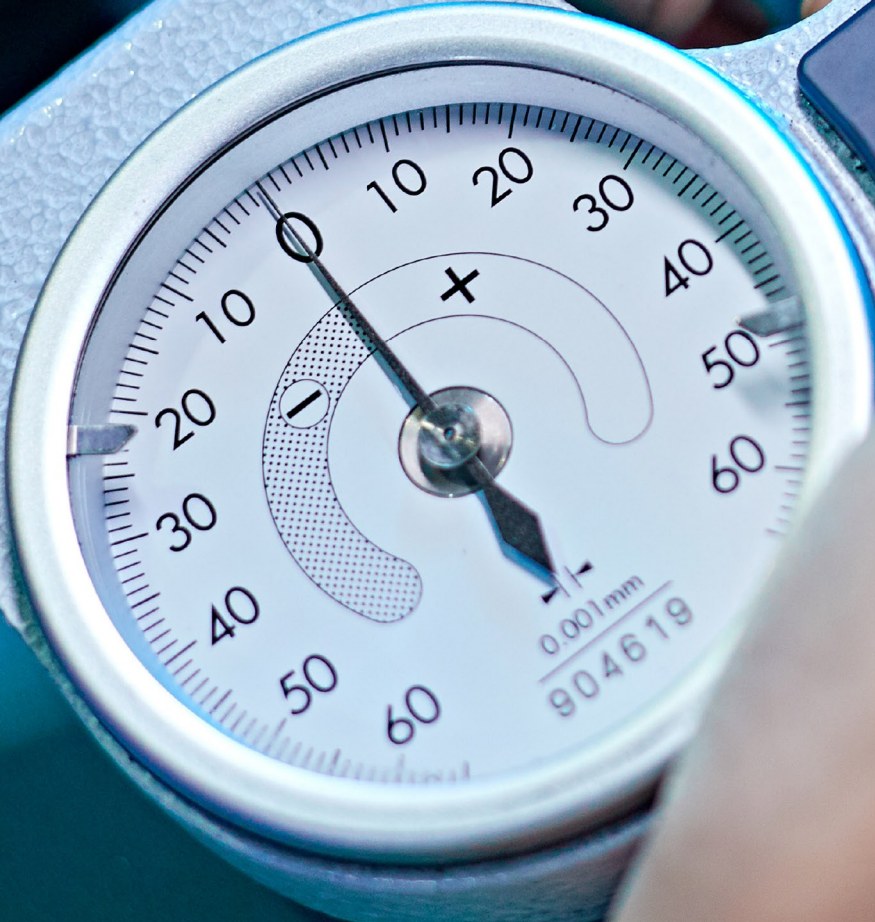
○ Disponibili a richiesta



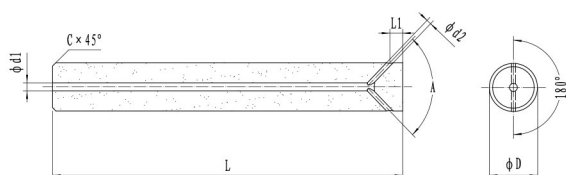
13.00

Mitutoyo

IP54 0-25mm



Cilindri rettificati con 2 fori di lubrificazione laterali

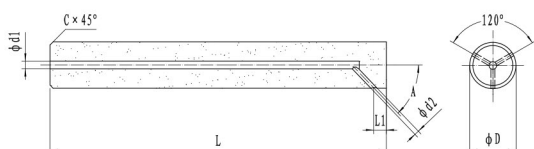


Cilindri rettificati con 2 fori di lubrificazione laterali

D(mm)		L(mm)		L1(mm)		C(mm)		d1		d2	
6	h5	57	+1/0	3	±0.3	0.4	±0.1	1.20	±0.15	0.80	±0.15
8	h5	63	+1/0	4	±0.3	0.6	±0.1	1.60	±0.15	1.10	±0.15
10	h5	72	+1/0	5	±0.3	0.8	±0.1	2.00	±0.15	1.40	±0.15
12	h5	83	+1/0	6	±0.3	0.8	±0.1	2.20	±0.15	1.60	±0.15
14	h5	83	+1/0	7	±0.3	0.8	±0.1	2.40	±0.15	1.70	±0.15
16	h5	92	+1/0	8	±0.3	0.8	±0.1	2.60	±0.15	1.90	±0.15
18	h5	92	+1/0	9	±0.3	1.0	±0.1	2.80	±0.15	2.00	±0.15
20	h5	104	+1/0	10	±0.3	1.0	±0.1	3.00	±0.15	2.10	±0.15

● Disponibili a magazzino ○ Disponibili a richiesta ◇ Altri gradi e dimensioni a richiesta

Cilindri rettificati con 3 fori di lubrificazione laterali

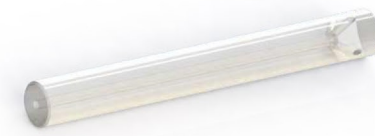
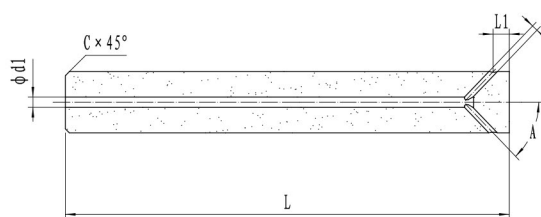


Cilindri rettificati con 3 fori di lubrificazione laterali

D(mm)		L(mm)		L1(mm)		C(mm)		d1		d2	
6	h5	57	+1/0	3	±0.3	0.4	±0.1	1.20	±0.15	0.70	±0.15
8	h5	63	+1/0	4	±0.3	0.6	±0.1	1.60	±0.15	0.90	±0.15
10	h5	72	+1/0	5	±0.3	0.8	±0.1	2.00	±0.15	1.20	±0.15
12	h5	83	+1/0	6	±0.3	0.8	±0.1	2.20	±0.15	1.30	±0.15
14	h5	83	+1/0	7	±0.3	0.8	±0.1	2.40	±0.15	1.40	±0.15
16	h5	92	+1/0	8	±0.3	0.8	±0.1	2.60	±0.15	1.50	±0.15
18	h5	92	+1/0	9	±0.3	1.0	±0.1	2.80	±0.15	1.60	±0.15
20	h5	104	+1/0	10	±0.3	1.0	±0.1	3.00	±0.15	1.70	±0.15

● Disponibili a magazzino ○ Disponibili a richiesta

Cilindri rettificati con 4 fori di lubrificazione laterali

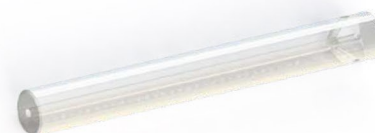
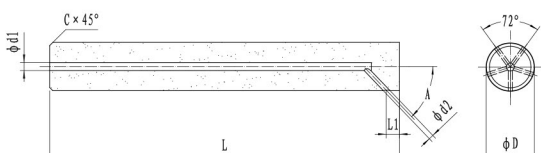


Cilindri rettificati con 4 fori di lubrificazione laterali

D(mm)		L(mm)		L1(mm)		C(mm)		d1		d2	
6	h5	57	+1/0	3	±0.3	0.4	±0.1	1.20	±0.15	0.60	±0.15
8	h5	63	+1/0	4	±0.3	0.6	±0.1	1.60	±0.15	0.80	±0.15
10	h5	72	+1/0	5	±0.3	0.8	±0.1	2.00	±0.15	1.00	±0.15
12	h5	83	+1/0	6	±0.3	0.8	±0.1	2.20	±0.15	1.10	±0.15
14	h5	83	+1/0	7	±0.3	0.8	±0.1	2.40	±0.15	1.20	±0.15
16	h5	92	+1/0	8	±0.3	0.8	±0.1	2.60	±0.15	1.30	±0.15
18	h5	92	+1/0	9	±0.3	1.0	±0.1	2.80	±0.15	1.40	±0.15
20	h5	104	+1/0	10	±0.3	1.0	±0.1	3.00	±0.15	1.50	±0.15

● Disponibili a magazzino ○ Disponibili a richiesta ◇ Altri gradi e dimensioni a richiesta

Cilindri rettificati con 5 fori di lubrificazione laterali

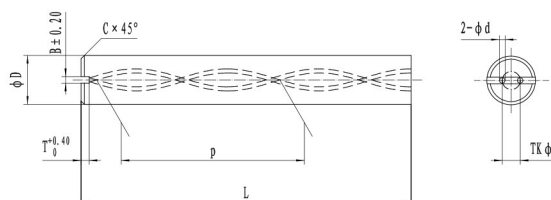


Cilindri rettificati con 5 fori di lubrificazione laterali

D(mm)		L(mm)		L1(mm)		C(mm)		d1		d2	
6	h5	57	+1/0	3	±0.3	0.4	±0.1	1.20	±0.15	0.50	±0.15
8	h5	63	+1/0	4	±0.3	0.6	±0.1	1.60	±0.15	0.70	±0.15
10	h5	72	+1/0	5	±0.3	0.8	±0.1	2.00	±0.15	0.90	±0.15
12	h5	83	+1/0	6	±0.3	0.8	±0.1	2.20	±0.15	1.00	±0.15
14	h5	83	+1/0	7	±0.3	0.8	±0.1	2.40	±0.15	1.10	±0.15
16	h5	92	+1/0	8	±0.3	0.8	±0.1	2.60	±0.15	1.20	±0.15
18	h5	92	+1/0	9	±0.3	1.0	±0.1	2.80	±0.15	1.30	±0.15
20	h5	104	+1/0	10	±0.3	1.0	±0.1	3.00	±0.15	1.40	±0.15

● Disponibili a magazzino ○ Disponibili a richiesta

Cilindri rettificati con 2 fori lurificazione 30° e scanalatura



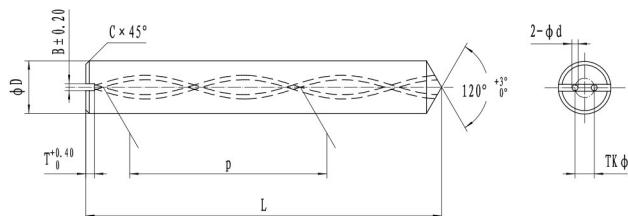
Cilindri rettificati con 2 fori lurificazione 30° e scanalatura

D(mm)	h5	L(mm)	C(mm)	TK(mm)	d(mm)	"P(mm)"	a_{max} (mm)	B(mm)	T(mm)
6	h5	63	+1/0 0.50 ±0.10	2.60 +0/-0.40	0.70 ±0.10	32.65 +0.67/-0.65	0.15	1.50	0.90
6	h5	67	+1/0 0.50 ±0.10	2.60 +0/-0.40	0.70 ±0.10	32.65 +0.67/-0.65	0.15	1.50	0.90
6	h5	75	+1/0 0.50 ±0.10	2.60 +0/-0.40	0.70 ±0.10	32.65 +0.67/-0.65	0.15	1.50	0.90
6	h5	92	+1/0 0.50 ±0.10	2.60 +0/-0.40	0.70 ±0.10	32.65 +0.67/-0.65	0.15	1.50	0.90
8	h5	80	+1/0 0.60 ±0.10	4.00 +0/-0.40	1.00 ±0.15	43.53 +0.89/-0.86	0.15	2.00	1.40
8	h5	92	+1/0 0.60 ±0.10	4.00 +0/-0.40	1.00 ±0.15	43.53 +0.89/-0.86	0.15	2.00	1.40
10	h5	90	+1/0 0.60 ±0.10	4.80 +0/-0.60	1.40 ±0.15	54.41 +1.11/-1.08	0.20	2.50	1.65
10	h5	104	+1/0 0.60 ±0.10	4.80 +0/-0.60	1.40 ±0.15	54.41 +1.11/-1.08	0.20	2.50	1.65
12	h5	103	+1/0 0.80 ±0.10	6.25 +0/-0.80	1.40 ±0.15	65.30 +1.34/-1.30	0.30	2.50	1.75
12	h5	119	+1/0 0.80 ±0.10	6.25 +0/-0.80	1.40 ±0.15	65.30 +1.34/-1.30	0.30	2.50	1.75
14	h5	108	+1/0 0.80 ±0.10	7.10 +0/-0.80	1.75 ±0.20	76.18 +1.56/-1.51	0.40	3.00	2.15
14	h5	125	+1/0 0.80 ±0.10	7.10 +0/-0.80	1.75 ±0.20	76.18 +1.56/-1.51	0.40	3.00	2.15
16	h5	116	+1/0 0.80 ±0.10	8.30 +0/-0.80	1.75 ±0.20	87.06 +1.78/-1.73	0.40	3.00	2.30
16	h5	134	+1/0 0.80 ±0.10	8.30 +0/-0.80	1.75 ±0.20	87.06 +1.78/-1.73	0.40	3.00	2.30
18	h5	124	+1/0 0.80 ±0.10	9.55 +0/-0.80	2.00 ±0.25	97.95 +2.00/-1.94	0.50	3.50	2.50
18	h5	144	+1/0 0.80 ±0.10	9.55 +0/-0.80	2.00 ±0.25	97.95 +2.00/-1.94	0.50	3.50	2.50
20	h5	132	+1/0 1.00 ±0.10	10.40 +0/-1.00	2.00 ±0.25	108.83 +2.23/-2.16	0.50	3.50	2.70
20	h5	154	+1/0 1.00 ±0.10	10.40 +0/-1.00	2.00 ±0.25	108.83 +2.23/-2.16	0.50	3.50	2.70

● Disponibili a magazzino

○ Disponibili a richiesta

Cilindri rettificati con 2 fori lubrificazione 30° scanalatura e punta



Cilindri rettificati con 2 fori lubrificazione 30° scanalatura e punta

D(mm)	L(mm)	C(mm)	TK(mm)	d(mm)	"P(mm)"	α_{max} - (mm)	B(mm)	T(mm)
6	h5 63	+1/0 0.50 ±0.10	2.60 +0/-0.40	0.70 ±0.10	32.65 +0.67/-0.65	0.15	1.50	0.90
6	h5 67	+1/0 0.50 ±0.10	2.60 +0/-0.40	0.70 ±0.10	32.65 +0.67/-0.65	0.15	1.50	0.90
6	h5 75	+1/0 0.50 ±0.10	2.60 +0/-0.40	0.70 ±0.10	32.65 +0.67/-0.65	0.15	1.50	0.90
6	h5 92	+1/0 0.50 ±0.10	2.60 +0/-0.40	0.70 ±0.10	32.65 +0.67/-0.65	0.15	1.50	0.90
8	h5 80	+1/0 0.60 ±0.10	4.00 +0/-0.40	1.00 ±0.15	43.53 +0.89/-0.86	0.15	2.00	1.40
8	h5 92	+1/0 0.60 ±0.10	4.00 +0/-0.40	1.00 ±0.15	43.53 +0.89/-0.86	0.15	2.00	1.40
10	h5 90	+1/0 0.60 ±0.10	4.80 +0/-0.60	1.40 ±0.15	54.41 +1.11/-1.08	0.20	2.50	1.65
10	h5 104	+1/0 0.60 ±0.10	4.80 +0/-0.60	1.40 ±0.15	54.41 +1.11/-1.08	0.20	2.50	1.65
12	h5 103	+1/0 0.80 ±0.10	6.25 +0/-0.80	1.40 ±0.15	65.30 +1.34/-1.30	0.30	2.50	1.75
12	h5 119	+1/0 0.80 ±0.10	6.25 +0/-0.80	1.40 ±0.15	65.30 +1.34/-1.30	0.30	2.50	1.75
14	h5 108	+1/0 0.80 ±0.10	7.10 +0/-0.80	1.75 ±0.20	76.18 +1.56/-1.51	0.40	3.00	2.15
14	h5 125	+1/0 0.80 ±0.10	7.10 +0/-0.80	1.75 ±0.20	76.18 +1.56/-1.51	0.40	3.00	2.15
16	h5 116	+1/0 0.80 ±0.10	8.30 +0/-0.80	1.75 ±0.20	87.06 +1.78/-1.73	0.40	3.00	2.30
16	h5 134	+1/0 0.80 ±0.10	8.30 +0/-0.80	1.75 ±0.20	87.06 +1.78/-1.73	0.40	3.00	2.30
18	h5 124	+1/0 0.80 ±0.10	9.55 +0/-0.80	2.00 ±0.25	97.95 +2.00/-1.94	0.50	3.50	2.50
18	h5 144	+1/0 0.80 ±0.10	9.55 +0/-0.80	2.00 ±0.25	97.95 +2.00/-1.94	0.50	3.50	2.50
20	h5 132	+1/0 1.00 ±0.10	10.40 +0/-1.00	2.00 ±0.25	108.83 +2.23/-2.16	0.50	3.50	2.70
20	h5 154	+1/0 1.00 ±0.10	10.40 +0/-1.00	2.00 ±0.25	108.83 +2.23/-2.16	0.50	3.50	2.70

●Disponibili a magazzino

○Disponibili a richiesta

Barrette Rettangolari



Barrette Rettangolari

H	Tolleranza	B	Tolleranza	L	Tolleranza	Grado	
						ST20F	ST10F
2	+0~+0.3	2.0	-0.1~+0.6	330	+0~+6.5	●	●
2	+0~+0.3	3.0	-0.1~+0.6	330	+0~+6.5	●	●
2	+0~+0.3	4.0	-0.1~+0.6	330	+0~+6.5	●	●
2	+0~+0.3	5.0	-0.1~+0.6	330	+0~+6.5	●	●
2	+0~+0.3	6.0	-0.1~+0.6	330	+0~+6.5	●	●
2	+0~+0.3	8.0	-0.3~+0.7	330	+0~+6.5	●	●
2	+0~+0.3	10.0	-0.3~+0.7	330	+0~+6.5	●	●
2	+0~+0.3	12.0	-0.3~+0.7	330	+0~+6.5	●	●
2	+0~+0.3	15.0	-0.1~+0.6	330	+0~+6.5	●	●
2	+0~+0.3	16.0	-0.1~+0.6	330	+0~+6.5	●	●
2	+0~+0.3	18.0	-0.1~+0.6	330	+0~+6.5	●	●
2	+0~+0.3	20.0	-0.1~+0.6	330	+0~+6.5	●	●
2	+0~+0.3	25.0	-0.3~+0.7	330	+0~+6.5	●	●
2.5	+0~+0.3	4.0	-0.3~+0.7	330	+0~+6.5	●	●
2.5	+0~+0.3	6.0	-0.3~+0.7	330	+0~+6.5	●	●
2.5	+0~+0.3	8.0	-0.3~+0.7	330	+0~+6.5	●	●
2.5	+0~+0.3	10.0	-0.5~+0.7	330	+0~+6.5	●	●
2.5	+0~+0.3	12.0	-0.5~+0.7	330	+0~+6.5	●	●
2.5	+0~+0.3	15.0	-0.5~+0.7	330	+0~+6.5	●	●
3	+0~+0.3	3.0	-0.5~+0.7	330	+0~+6.5	●	●
3	+0~+0.3	4.0	-0.5~+0.7	330	+0~+6.5	●	●
3	+0~+0.3	5.0	-0.5~+0.7	330	+0~+6.5	●	●
3	+0~+0.3	6.0	-0.5~+0.7	330	+0~+6.5	●	●
3	+0~+0.3	8.0	-0.1~+0.6	330	+0~+6.5	●	●
3	+0~+0.3	10.0	-0.1~+0.6	330	+0~+6.5	●	●
3	+0~+0.3	12.0	-0.1~+0.6	330	+0~+6.5	●	●
3	+0~+0.3	13.0	-0.1~+0.6	330	+0~+6.5	●	●
3	+0~+0.3	14.0	-0.3~+0.7	330	+0~+6.5	●	●
3	+0~+0.3	16.0	-0.3~+0.7	330	+0~+6.5	●	●
3	+0~+0.3	18.0	-0.3~+0.7	330	+0~+6.5	●	●
3	+0~+0.3	20.0	-0.3~+0.7	330	+0~+6.5	●	●
3	+0~+0.3	22.0	-0.3~+0.7	330	+0~+6.5	●	●
3	+0~+0.3	25.0	-0.5~+0.7	330	+0~+6.5	●	●
3	+0~+0.3	30.0	-0.5~+0.7	330	+0~+6.5	●	●
3	+0~+0.3	32.0	-0.5~+0.7	330	+0~+6.5	●	●
4	+0~+0.3	4.0	-0.5~+0.7	330	+0~+6.5	●	●
4	+0~+0.3	5.0	-0.5~+0.7	330	+0~+6.5	●	●

Barrette Rettangolari

H	Tolleranza	B	Tolleranza	L	Tolleranza	Grado	
						ST20F	ST10F
4	+0~+0.3	6.0	-0.5~+0.7	330	+0~+6.5	●	●
4	+0~+0.3	8.0	-0.5~+0.7	330	+0~+6.5	●	●
4	+0~+0.3	10.0	-0.5~+0.7	330	+0~+6.5	●	●
4	+0~+0.3	12.0	-0.5~+0.7	330	+0~+6.5	●	●
4	+0~+0.3	14.0	-0.5~+0.7	330	+0~+6.5	●	●
4	+0~+0.3	16.0	-0.5~+0.7	330	+0~+6.5	●	●
4	+0~+0.3	18.0	-0.5~+0.7	330	+0~+6.5	●	●
4	+0~+0.3	20.0	-0.5~+0.7	330	+0~+6.5	●	●
4	+0~+0.3	22.0	-0.8~+0.9	330	+0~+6.5	●	●
4	+0~+0.3	25.0	-0.1~+0.6	330	+0~+6.5	●	●
4	+0~+0.3	30.0	-0.1~+0.6	330	+0~+6.5	●	●
4	+0~+0.3	35.0	-0.3~+0.7	330	+0~+6.5	●	●
5	+0~+0.3	5.0	-0.3~+0.7	330	+0~+6.5	●	●
5	+0~+0.3	8.0	-0.3~+0.7	330	+0~+6.5	●	●
5	+0~+0.3	10.0	-0.3~+0.7	330	+0~+6.5	●	●
5	+0~+0.3	12.0	-0.3~+0.7	330	+0~+6.5	●	●
5	+0~+0.3	15.0	-0.5~+0.7	330	+0~+6.5	●	●
5	+0~+0.3	16.0	-0.5~+0.7	330	+0~+6.5	●	●
5	+0~+0.3	18.0	-0.5~+0.7	330	+0~+6.5	●	●
5	+0~+0.3	20.0	-0.5~+0.7	330	+0~+6.5	●	●
5	+0~+0.3	22.0	-0.8~+0.9	330	+0~+6.5	●	●
5	+0~+0.3	25.0	-0.8~+0.9	330	+0~+6.5	●	●
5	+0~+0.3	30.0	-0.8~+0.9	330	+0~+6.5	●	●
5	+0~+0.3	35.0	-0.1~+0.6	330	+0~+6.5	●	●
6	+0~+0.3	6.0	-0.1~+0.6	330	+0~+6.5	●	●
6	+0~+0.3	16.0	-0.1~+0.6	330	+0~+6.5	●	●
6	+0~+0.3	20.0	-0.1~+0.6	330	+0~+6.5	●	●
6	+0~+0.3	25.0	-0.3~+0.7	330	+0~+6.5	●	●
6	+0~+0.3	30.0	-0.3~+0.7	330	+0~+6.5	●	●
6	+0~+0.3	35.0	-0.3~+0.7	330	+0~+6.5	●	●
8	+0~+0.3	8.0	-0.3~+0.7	330	+0~+6.5	●	●
10	+0~+0.3	10.0	-0.3~+0.7	330	+0~+6.5	●	●
12	+0~+0.3	12.0	-0.3~+0.7	330	+0~+6.5	●	●

●Disponibili a magazzino ○Disponibili a richiesta

Barrette Gradi e specifiche

Grado	Co	Dimen- sione Grano	Durezza		Densità g/cm ³	Resistenza Flessione MPa	Resistenza Rottura MNm ^{-3/2}	Modulo Elas- ticos GPa	Coefficiente Ter- mico di Espan- sione 10 ⁻⁶ /°C
	Co%		HRA	HV ₃₀					
ST01F	4	Sub-Micron	94.0	2060	15.1	2800	9	550	4.6
ST03F	5	Sub-Micron	93.4	1930	14.9	3000	10	540	4.8
ST10F	6	Sub-Micron	92.9	1840	14.8	3500	10	530	4.9
ST10UF	6	Ultra-fine	93.8	2040	14.7	2900	9	530	4.9
ST05F	6	Sub-Micron	92.9	1840	14.8	3400	10	530	4.9
ST03B	6	Sub-Micron	91.6	1600	14.9	2800	11	530	4.9
ST05B	6.5	Fine	91.4	1550	14.8	3000	12	525	4.9
ST10C	7	Fine	90.7	1480	14.7	3200	12	520	5.0
ST11F	8	Sub-Micron	92.3	1720	14.6	3800	10	510	5.1
ST11UF	8	Ultra-fine	93.5	1960	14.5	3000	9	510	5.1
ST10B	8	Sub-Micron	90.5	1460	14.6	3200	11	510	5.1
ST12F	9	Ultra-fine	93.5	1960	14.4	4500	10	500	5.3
ST12NF	9	Nano	94.2	2100	14.3	4800	9	500	5.3
ST15F	10	Sub-Micron	92.0	1670	14.3	3600	11	490	5.4
ST20F	10	Sub-Micron	91.7	1620	14.4	4300	11	490	5.4
ST37F	15	Sub-Micron	89.6	1350	13.8	4100	16	430	6.3
ST37NF	15	Nano	92.0	1670	13.8	4800	10	430	6.3
ST37UF	15	Ultra-fine	91.5	1570	13.8	4000	11	430	6.3

TABELLA GRADI CILINDRI

Tabella gradi cilindri

Grado	Co	Dimensioni Grado WC	Durezza		Densità g/cm ³	Resistenza Flessione MPa	Resistenza Rottura MNm ^{-3/2}	Modulo Elastico GPa	Coefficiente Espansione Termica 10 ⁻⁶ /°C
	Co%		HRA	HV ₃₀					
ST10F	6	Sub-Micron	92.9	1840	14.8	3500	10	530	4.9
ST10UF	6	Ultra-fine	93.8	2040	14.7	2900	9	530	4.9
ST10NF	6	Nano	94.5	2180	14.6	4000	9	530	4.9
ST10C	7	Fine	90.7	1480	14.7	3200	12	520	5.0
ST11F	8	Sub-Micron	92.3	1720	14.6	3800	10	510	5.1
ST11UF	8	Ultra-fine	93.5	1960	14.5	3000	9	510	5.1
ST12F	9	Ultra-fine	93.5	1960	14.4	4500	10	500	5.3
ST12NF	9	Nano	94.2	2100	14.3	4800	9	500	5.3
ST15D	9	Sub-Micron	91.2	1520	14.4	3500	13	500	5.3
ST15F	10	Sub-Micron	92.0	1670	14.3	3600	11	490	5.4
ST20F	10	Sub-Micron	91.7	1620	14.4	4300	11	490	5.4
ST20D	10	Sub-Micron	92.0	1670	14.3	4100	11	490	5.4
ST25F	12	Ultra-fine	92.4	1740	14.1	5100	10	470	5.7
ST25EF	12	Ultra-fine	92.2	1700	14.1	4800	10	470	5.7
ST25D	12	Ultra-fine	91.5	1570	14.2	3900	13	470	5.7
ST37NF	15	Nano	92.0	1670	13.8	4800	10	430	6.3

I valori indicati sono medi

I valori possono subire modifiche senza preavviso.

Grade ST12F SEM Carburo Nano grana

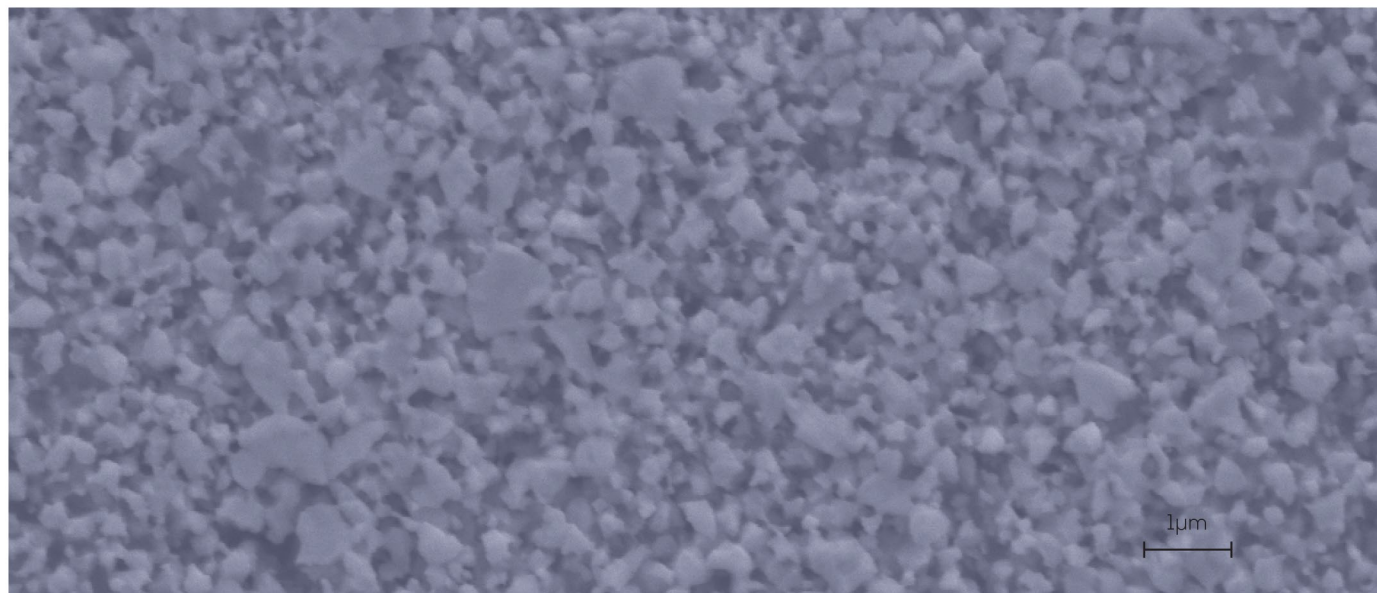


Tabella applicazione gradi

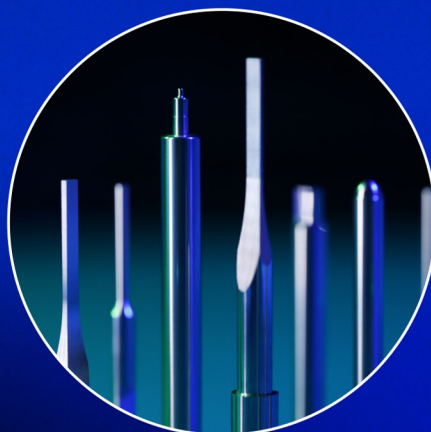
Materiale	Applicazione	Grado
Acciaio, Acciaio Legato/Fuso	Sgrossatura	ST20F/ST11F
Acciaio, Acciaio Legato/Fuso	Finitura	ST20F/ST25EF
Acciaio, Acciaio Legato/Fuso	Foratura	ST15F/ST15D
Acciaio, Acciaio Legato/Fuso	Alesatura	ST11F/ST12F/ST25F
Ghisa	Sgrossatura	ST11F/ST20F
Ghisa	Finitura	ST10F
Ghisa	Foratura	ST20F/ST15F
Ghisa	Alesatura	ST11F
Acciaio Temperato	Sgrossatura	ST12F/ST25F
Acciaio Temperato	Finitura	ST12F/ST12NF
Acciaio Temperato	Foratura	ST12F
Acciaio Inox	Sgrossatura	ST15D/ST25EF/ST25D
Acciaio Inox	Finitura	ST25F/ST12F/ST15D/ST25D
Acciaio Inox	Foratura	ST15F
Acciaio Inox	Alesatura	ST15F/ST11F
Titanio/Alte temperature	Sgrossatura	ST25EF/ST25F
Titanio/Alte temperature	Finitura	ST25F/ST12F
Titanio/Alte temperature	Foratura	ST15F
Titanio/Alte temperature	Alesatura	ST15F/ST25F/ST11F
Alluminio/Rame	Sgrossatura	ST11F/ST10F
Alluminio/Rame	Finitura	ST10UF
Alluminio/Rame	Foratura	ST11F/ST15F
Alluminio/Rame	Alesatura	ST11F
Composti Plastici	Sgrossatura	ST10UF/ST10NF
Composti Plastici	Finitura	ST10UF/ST10NF/ST12NF
Composti Plastici	Foratura	ST11F/ST15F/ST12NF
Rivestimento Diamante		ST10C

Note:

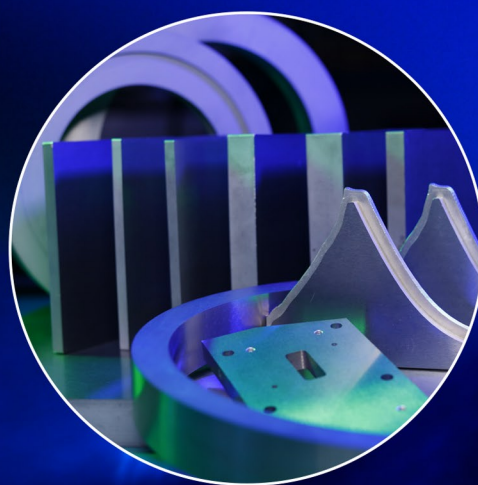
A seconda dei materiali lavorati, in base all'utensile realizzato, vi consigliamo di gradi da utilizzare.



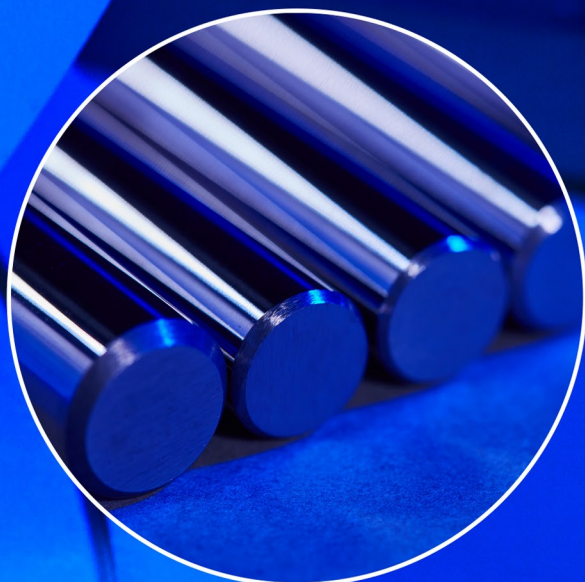
Rivestimento



Prodotti finiti



Blocchi/Speciali



Cilindri

